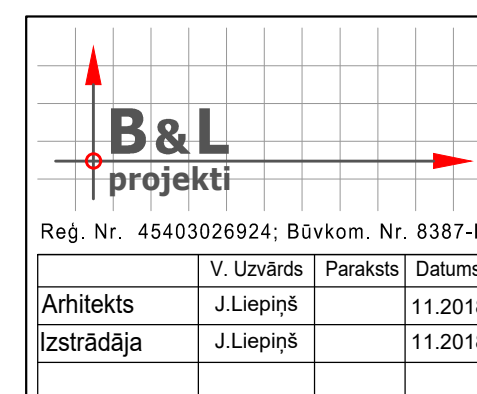


This technical drawing is a cross-section of a building. It shows a series of rooms and structural elements. On the left, there is a curved wall and a shaded area. A green line runs horizontally across the bottom, with a slight upward slope on the right side. Vertical dashed lines are labeled with circled numbers 1 through 8 from right to left. The drawing includes various structural details such as walls, floors, and rooflines, with some areas filled with hatching or stippling to indicate specific materials or construction details.



Pasūtītājs:	Madonas novada pašvaldība	Pasūt. Nr.	57-2018
Adrese:	Saieta laukums 1, Madona, Madonas novads, LV-4801		
Projekta nosaukums:	Estrādes jaunbūve un teritorijas labiekārtojums	Arhīva Nr.	57/10-2018
Adrese:	Egļu iela 1, Madona, Madonas novads, LV-4801		
Rasējums:	Fasādes asis 8-1, H-A	Stadija:	MBP
		Daļa:	AR
Mērogs:	M1:200	Lapa:	AR-05
		Lapas:	1/1