

Madona 3/4

Ozolu iela
Mārtiņa iela
Aronas iela
Gaiziņa iela
Lazdu iela
Egļu iela
Ābeļu iela
Augu iela
Akmeņu iela
Strauta iela
Martas Riekstas iela
Jaunā iela
Biržu iela
Alunāna iela

Partner for Contact:
Order No.:
Company:
Customer No.:

Date: 17.03.2015
Operator:

Operator
Telephone
Fax
e-Mail

Table of contents

Madona 3/4	
Project Cover	1
Table of contents	2
SIA Elnitor RoadSpark SLIM 80W	
Luminaire Data Sheet	5
RoadSpark SLIM 60W	
Luminaire Data Sheet	6
Ozolu iela	
Planning data	7
Luminaire parts list	8
False Color Rendering	9
Valuation Fields	
Valuation Field Roadway 1	
Observer	
Observer 1	
Isolines (L)	10
Observer 2	
Isolines (L)	11
Mārtiņa iela	
Planning data	12
Luminaire parts list	13
False Color Rendering	14
Valuation Fields	
Valuation Field Roadway 1	
Observer	
Observer 1	
Isolines (L)	15
Observer 2	
Isolines (L)	16
Aronas iela	
Planning data	17
Luminaire parts list	18
False Color Rendering	19
Valuation Fields	
Valuation Field Roadway 1	
Observer	
Observer 1	
Isolines (L)	20
Observer 2	
Isolines (L)	21
Gaiziņa iela	
Planning data	22
Luminaire parts list	23
False Color Rendering	24
Valuation Fields	
Valuation Field Roadway 1	
Observer	
Observer 1	
Isolines (L)	25
Observer 2	
Isolines (L)	26
Lazdu iela	
Planning data	27
Luminaire parts list	28

Operator
Telephone
Fax
e-Mail

Table of contents

False Color Rendering	29
Valuation Fields	
Valuation Field Roadway 1	
Observer	
Observer 1	
Isolines (L)	30
Observer 2	
Isolines (L)	31
Eglu iela	
Planning data	32
Luminaire parts list	33
False Color Rendering	34
Valuation Fields	
Valuation Field Roadway 1	
Observer	
Observer 1	
Isolines (L)	35
Observer 2	
Isolines (L)	36
Ābeļu iela	
Planning data	37
Luminaire parts list	38
False Color Rendering	39
Valuation Fields	
Valuation Field Roadway 1	
Observer	
Observer 1	
Isolines (L)	40
Observer 2	
Isolines (L)	41
Augu iela	
Planning data	42
Luminaire parts list	43
False Color Rendering	44
Valuation Fields	
Valuation Field Roadway 1	
Observer	
Observer 1	
Isolines (L)	45
Observer 2	
Isolines (L)	46
Akmeņu iela	
Planning data	47
Luminaire parts list	48
False Color Rendering	49
Valuation Fields	
Valuation Field Roadway 1	
Observer	
Observer 1	
Isolines (L)	50
Observer 2	
Isolines (L)	51
Strauta iela	
Planning data	52

Operator
Telephone
Fax
e-Mail

Table of contents

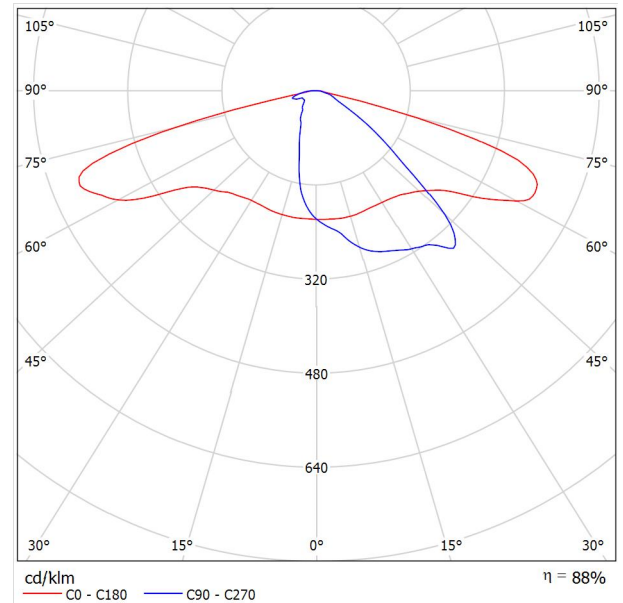
Luminaire parts list	53
False Color Rendering	54
Valuation Fields	
Valuation Field Roadway 1	
Observer	
Observer 1	
Isolines (L)	55
Observer 2	
Isolines (L)	56
M.Riekstas iela	
Planning data	57
Luminaire parts list	58
False Color Rendering	59
Valuation Fields	
Valuation Field Roadway 1	
Observer	
Observer 1	
Isolines (L)	60
Observer 2	
Isolines (L)	61
Jaunā iela	
Planning data	62
Luminaire parts list	63
False Color Rendering	64
Valuation Fields	
Valuation Field Roadway 1	
Observer	
Observer 1	
Isolines (L)	65
Observer 2	
Isolines (L)	66
Biržu iela	
Planning data	67
Luminaire parts list	68
False Color Rendering	69
Valuation Fields	
Valuation Field Roadway 1	
Observer	
Observer 1	
Isolines (L)	70
Observer 2	
Isolines (L)	71
Alunāna iela	
Planning data	72
Luminaire parts list	73
False Color Rendering	74
Valuation Fields	
Valuation Field Roadway 1	
Observer	
Observer 1	
Isolines (L)	75
Observer 2	
Isolines (L)	76

Operator
Telephone
Fax
e-Mail

SIA Elnitor RoadSpark SLIM 80W / Luminaire Data Sheet

Luminous emittance 1:

See our luminaire catalog for an image of the luminaire.



Luminaire classification according to CIE: 100
CIE flux code: 35 68 94 100 88

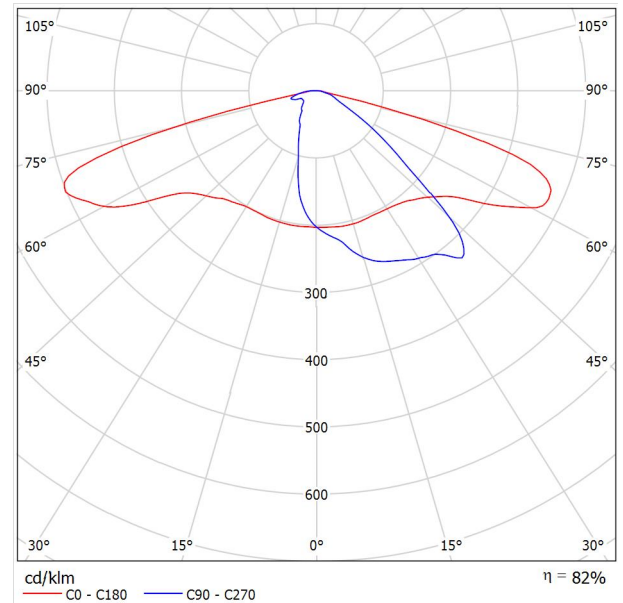
Due to missing symmetry properties, no UGR table can be displayed for this luminaire.

Operator
Telephone
Fax
e-Mail

RoadSpark SLIM 60W / Luminaire Data Sheet

Luminous emittance 1:

See our luminaire catalog for an image of the luminaire.



Luminaire classification according to CIE: 100
CIE flux code: 35 68 94 100 82

Due to missing symmetry properties, no UGR table can be displayed for this luminaire.

Operator
Telephone
Fax
e-Mail

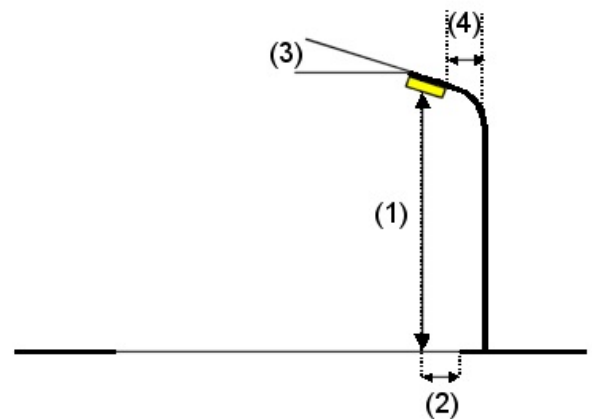
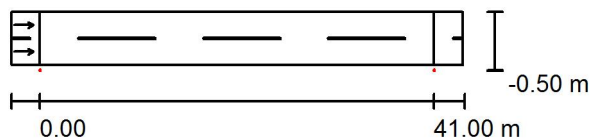
Ozolu iela / Planning data

Street Profile

Roadway 1 (Width: 5.500 m, Number of lanes: 2, tarmac: R3, q0: 0.070)

Light loss factor: 0.85

Luminaire Arrangements



Luminaire:	RoadSpark SLIM 60W
Luminous flux (Luminaire):	6072 lm
Luminous flux (Lamps):	7440 lm
Luminaire Wattage:	60.0 W
Arrangement:	Single row, bottom
Pole Distance:	41.000 m
Mounting Height (1):	8.000 m
Height:	8.000 m
Overhang (2):	-0.500 m
Boom Angle (3):	0.0 °
Boom Length (4):	1.000 m

Maximum luminous intensities

at 70°:	457 cd/klm
at 80°:	96 cd/klm
at 90°:	12 cd/klm

Any direction forming the specified angle from the downward vertical, with the luminaire installed for use.

No luminous intensities above 90°.

Arrangement complies with luminous intensity class G3.

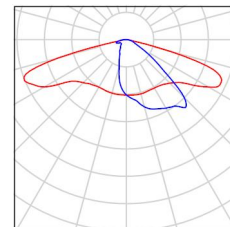
Arrangement complies with glare index class D.4.

Operator
Telephone
Fax
e-Mail

Ozolu iela / Luminaire parts list

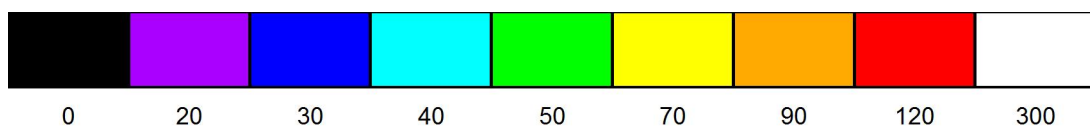
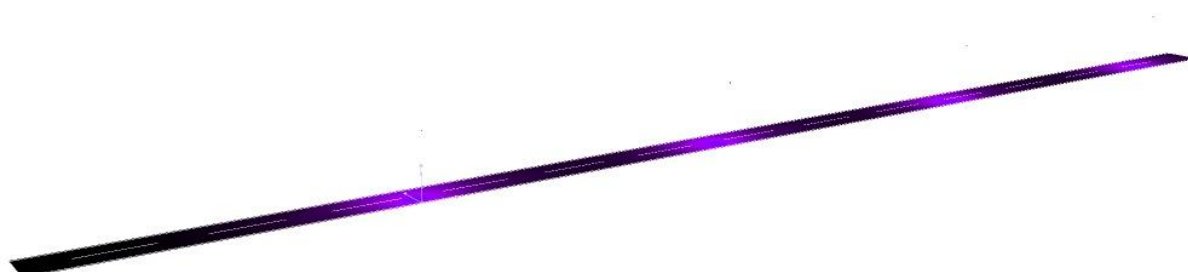
RoadSpark SLIM 60W
Article No.:
Luminous flux (Luminaire): 6072 lm
Luminous flux (Lamps): 7440 lm
Luminaire Wattage: 60.0 W
Luminaire classification according to CIE: 100
CIE flux code: 35 68 94 100 82
Fitting: 1 x Cree XP-G (Correction Factor 1.000).

See our luminaire
catalog for an image of
the luminaire.



Operator
Telephone
Fax
e-Mail

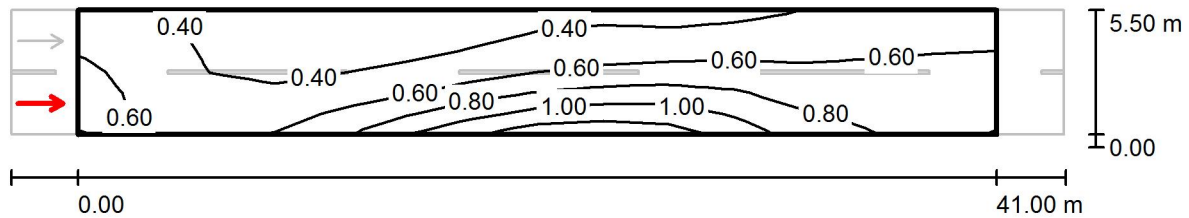
Ozolu iela / False Color Rendering



lx

Operator
Telephone
Fax
e-Mail

Ozolu iela / Valuation Field Roadway 1 / Observer 1 / Isolines (L)



Values in Candela/m², Scale 1 : 337

Grid: 14 x 6 Points

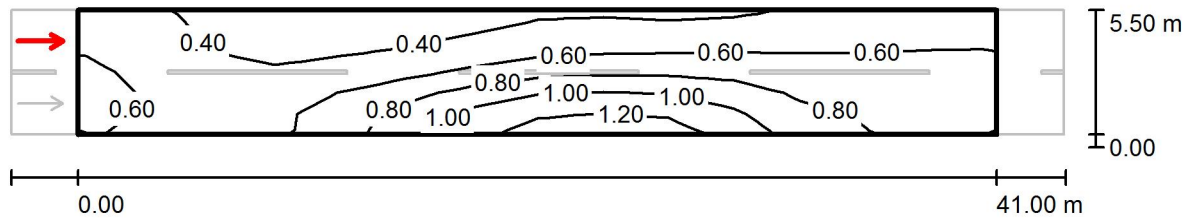
Observer Position: (-60.000 m, 1.375 m, 1.500 m)

tarmac: R3, q0: 0.070

	L_{av} [cd/m ²]	U0	UI	TI [%]
Calculated values:	0.59	0.45	0.44	15
Required values according to class ME5:	≥ 0.50	≥ 0.35	≥ 0.40	≤ 15
Fulfilled/Not fulfilled:	<input checked="" type="checkbox"/>	<input checked="" type="checkbox"/>	<input checked="" type="checkbox"/>	<input checked="" type="checkbox"/>

Operator
Telephone
Fax
e-Mail

Ozolu iela / Valuation Field Roadway 1 / Observer 2 / Isolines (L)



Values in Candela/m², Scale 1 : 337

Grid: 14 x 6 Points

Observer Position: (-60.000 m, 4.125 m, 1.500 m)

tarmac: R3, q0: 0.070

	L_{av} [cd/m²]	U0	UI	TI [%]
Calculated values:	0.64	0.44	0.59	11
Required values according to class ME5:	≥ 0.50	≥ 0.35	≥ 0.40	≤ 15
Fulfilled/Not fulfilled:	<input checked="" type="checkbox"/>	<input checked="" type="checkbox"/>	<input checked="" type="checkbox"/>	<input checked="" type="checkbox"/>

Operator
Telephone
Fax
e-Mail

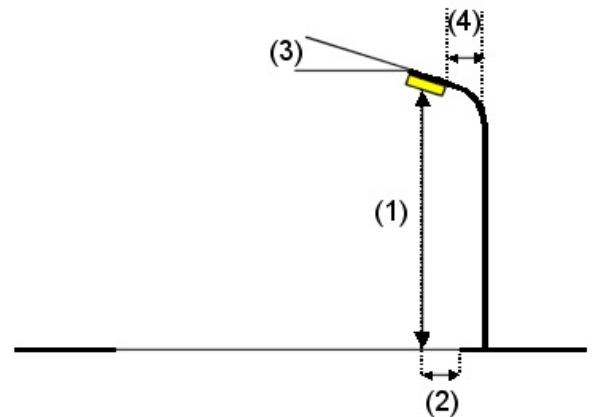
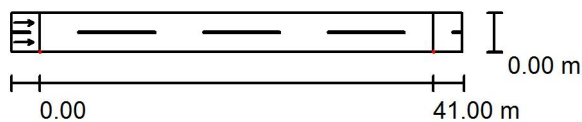
Mārtiņa iela / Planning data

Street Profile

Roadway 1 (Width: 4.000 m, Number of lanes: 2, tarmac: R3, q0: 0.070)

Light loss factor: 0.85

Luminaire Arrangements



Luminaire:	RoadSpark SLIM 60W
Luminous flux (Luminaire):	6072 lm
Luminous flux (Lamps):	7440 lm
Luminaire Wattage:	60.0 W
Arrangement:	Single row, bottom
Pole Distance:	41.000 m
Mounting Height (1):	8.000 m
Height:	8.000 m
Overhang (2):	0.000 m
Boom Angle (3):	0.0 °
Boom Length (4):	1.000 m

Maximum luminous intensities

at 70°:	457 cd/klm
at 80°:	96 cd/klm
at 90°:	12 cd/klm

Any direction forming the specified angle from the downward vertical, with the luminaire installed for use.

No luminous intensities above 90°.

Arrangement complies with luminous intensity class G3.

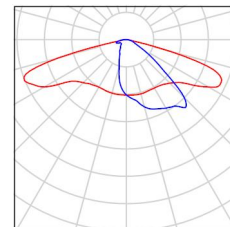
Arrangement complies with glare index class D.4.

Operator
Telephone
Fax
e-Mail

Mārtiņa iela / Luminaire parts list

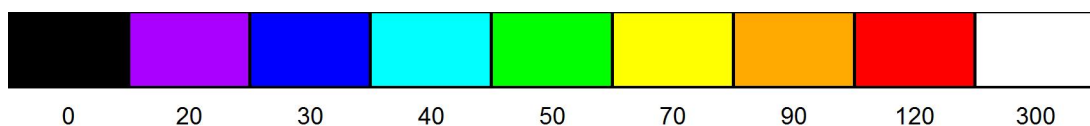
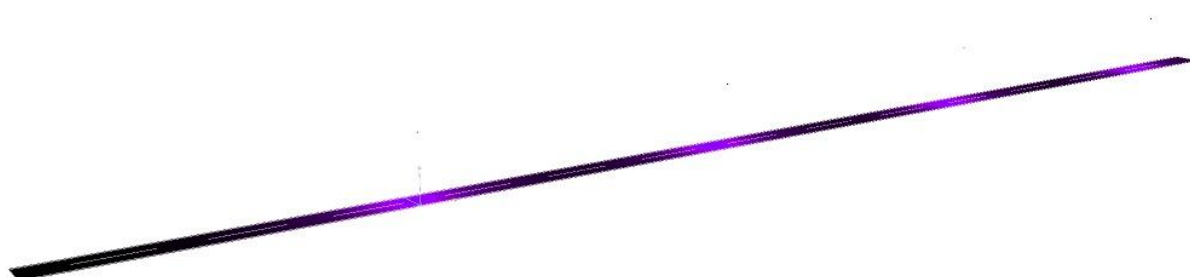
RoadSpark SLIM 60W
Article No.:
Luminous flux (Luminaire): 6072 lm
Luminous flux (Lamps): 7440 lm
Luminaire Wattage: 60.0 W
Luminaire classification according to CIE: 100
CIE flux code: 35 68 94 100 82
Fitting: 1 x Cree XP-G (Correction Factor 1.000).

See our luminaire
catalog for an image of
the luminaire.



Operator
Telephone
Fax
e-Mail

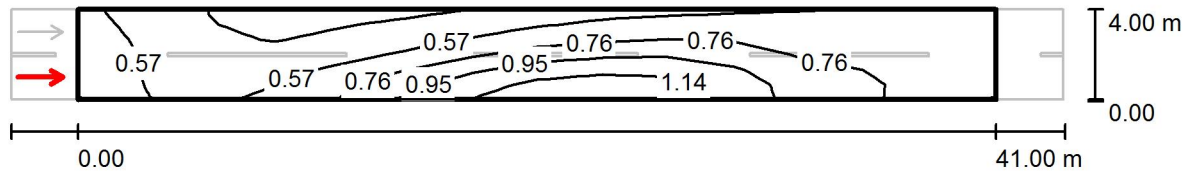
Mārtiņa iela / False Color Rendering



lx

Operator
Telephone
Fax
e-Mail

Mārtiņa iela / Valuation Field Roadway 1 / Observer 1 / Isolines (L)



Values in Candela/m², Scale 1 : 337

Grid: 14 x 6 Points

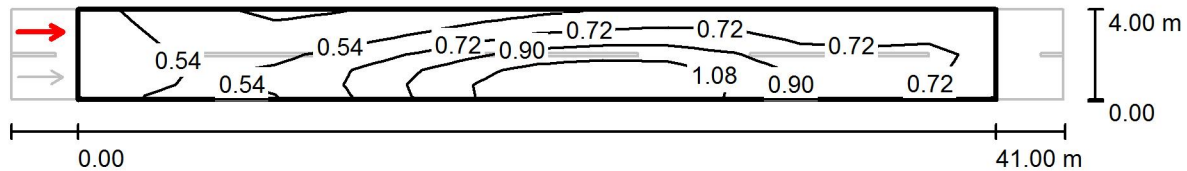
Observer Position: (-60.000 m, 1.000 m, 1.500 m)

tarmac: R3, q0: 0.070

	L_{av} [cd/m ²]	U0	UI	TI [%]
Calculated values:	0.69	0.47	0.41	13
Required values according to class ME5:	≥ 0.50	≥ 0.35	≥ 0.40	≤ 15
Fulfilled/Not fulfilled:	✓	✓	✓	✓

Operator
Telephone
Fax
e-Mail

Mārtiņa iela / Valuation Field Roadway 1 / Observer 2 / Isolines (L)



Values in Candela/m², Scale 1 : 337

Grid: 14 x 6 Points

Observer Position: (-60.000 m, 3.000 m, 1.500 m)

tarmac: R3, q0: 0.070

	L_{av} [cd/m ²]	U0	UI	TI [%]
Calculated values:	0.73	0.46	0.47	11
Required values according to class ME5:	≥ 0.50	≥ 0.35	≥ 0.40	≤ 15
Fulfilled/Not fulfilled:	✓	✓	✓	✓

Operator
Telephone
Fax
e-Mail

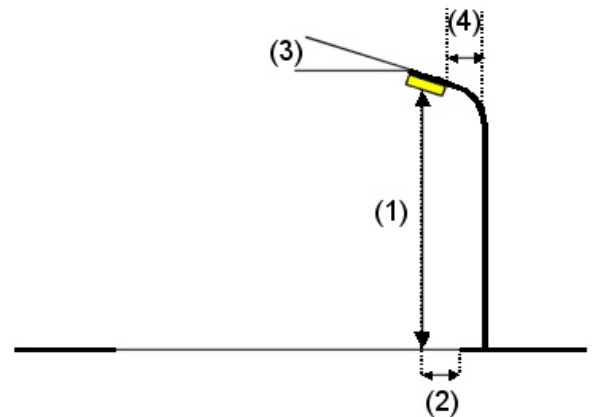
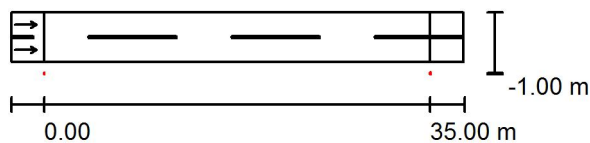
Aronas iela / Planning data

Street Profile

Roadway 1 (Width: 4.500 m, Number of lanes: 2, tarmac: R3, q0: 0.070)

Light loss factor: 0.85

Luminaire Arrangements



Luminaire:	RoadSpark SLIM 60W
Luminous flux (Luminaire):	6072 lm
Luminous flux (Lamps):	7440 lm
Luminaire Wattage:	60.0 W
Arrangement:	Single row, bottom
Pole Distance:	35.000 m
Mounting Height (1):	8.000 m
Height:	8.000 m
Overhang (2):	-1.000 m
Boom Angle (3):	0.0 °
Boom Length (4):	1.000 m

Maximum luminous intensities

at 70°:	457 cd/klm
at 80°:	96 cd/klm
at 90°:	12 cd/klm

Any direction forming the specified angle from the downward vertical, with the luminaire installed for use.

No luminous intensities above 90°.

Arrangement complies with luminous intensity class G3.

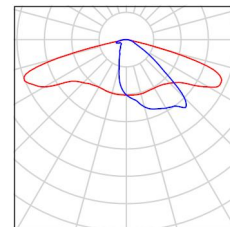
Arrangement complies with glare index class D.4.

Operator
Telephone
Fax
e-Mail

Aronas iela / Luminaire parts list

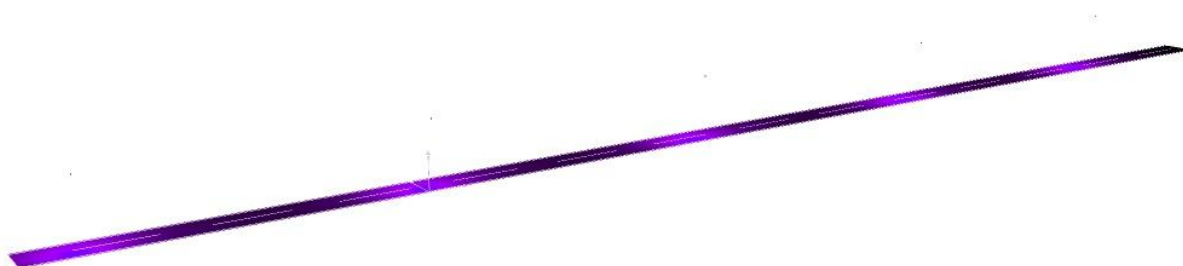
RoadSpark SLIM 60W
Article No.:
Luminous flux (Luminaire): 6072 lm
Luminous flux (Lamps): 7440 lm
Luminaire Wattage: 60.0 W
Luminaire classification according to CIE: 100
CIE flux code: 35 68 94 100 82
Fitting: 1 x Cree XP-G (Correction Factor 1.000).

See our luminaire
catalog for an image of
the luminaire.



Operator
Telephone
Fax
e-Mail

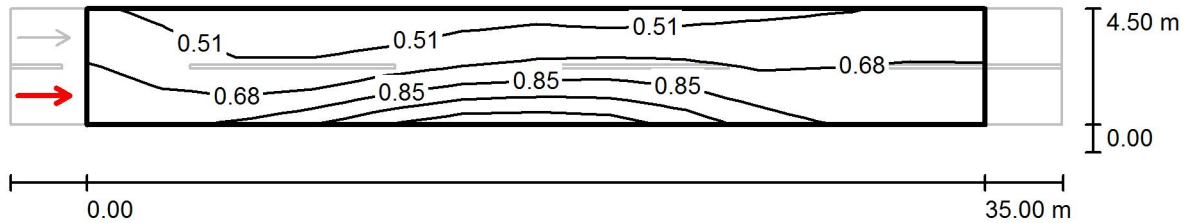
Aronas iela / False Color Rendering



0 20 30 40 50 70 90 120 300 lx

Operator
Telephone
Fax
e-Mail

Aronas iela / Valuation Field Roadway 1 / Observer 1 / Isolines (L)



Values in Candela/m², Scale 1 : 294

Grid: 12 x 6 Points

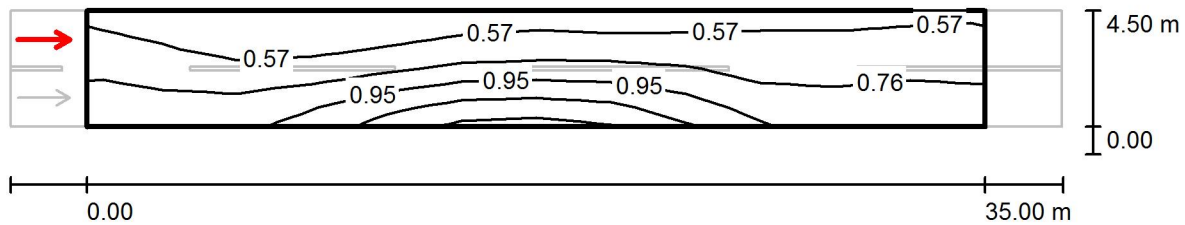
Observer Position: (-60.000 m, 1.125 m, 1.500 m)

tarmac: R3, q0: 0.070

	L_{av} [cd/m ²]	U0	UI	TI [%]
Calculated values:	0.69	0.57	0.64	13
Required values according to class ME5:	≥ 0.50	≥ 0.35	≥ 0.40	≤ 15
Fulfilled/Not fulfilled:	✓	✓	✓	✓

Operator
Telephone
Fax
e-Mail

Aronas iela / Valuation Field Roadway 1 / Observer 2 / Isolines (L)



Values in Candela/m², Scale 1 : 294

Grid: 12 x 6 Points

Observer Position: (-60.000 m, 3.375 m, 1.500 m)

tarmac: R3, q0: 0.070

	L_{av} [cd/m ²]	U0	UI	TI [%]
Calculated values:	0.74	0.56	0.75	10
Required values according to class ME5:	≥ 0.50	≥ 0.35	≥ 0.40	≤ 15
Fulfilled/Not fulfilled:	<input checked="" type="checkbox"/>	<input checked="" type="checkbox"/>	<input checked="" type="checkbox"/>	<input checked="" type="checkbox"/>

Operator
Telephone
Fax
e-Mail

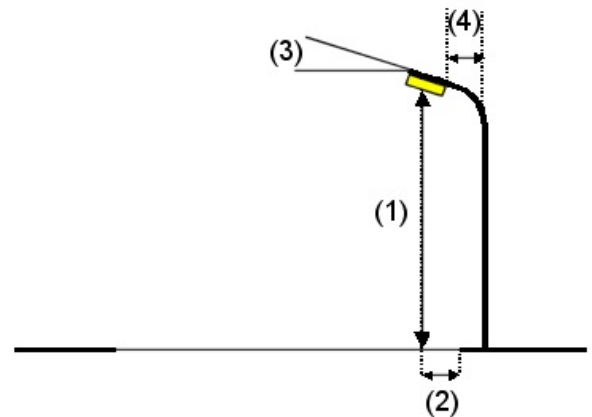
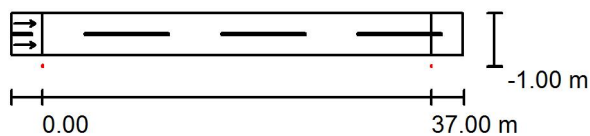
Gaiziņa iela / Planning data

Street Profile

Roadway 1 (Width: 4.000 m, Number of lanes: 2, tarmac: R3, q0: 0.070)

Light loss factor: 0.85

Luminaire Arrangements



Luminaire:	RoadSpark SLIM 60W
Luminous flux (Luminaire):	6072 lm
Luminous flux (Lamps):	7440 lm
Luminaire Wattage:	60.0 W
Arrangement:	Single row, bottom
Pole Distance:	37.000 m
Mounting Height (1):	8.000 m
Height:	8.000 m
Overhang (2):	-1.000 m
Boom Angle (3):	0.0 °
Boom Length (4):	1.000 m

Maximum luminous intensities

at 70°:	457 cd/klm
at 80°:	96 cd/klm
at 90°:	12 cd/klm

Any direction forming the specified angle from the downward vertical, with the luminaire installed for use.

No luminous intensities above 90°.

Arrangement complies with luminous intensity class G3.

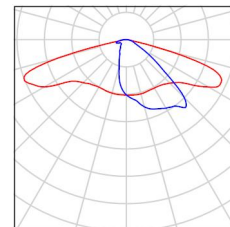
Arrangement complies with glare index class D.4.

Operator
Telephone
Fax
e-Mail

Gaiziņa iela / Luminaire parts list

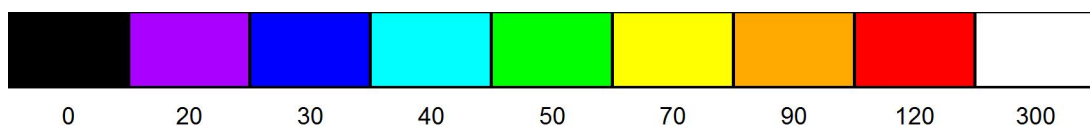
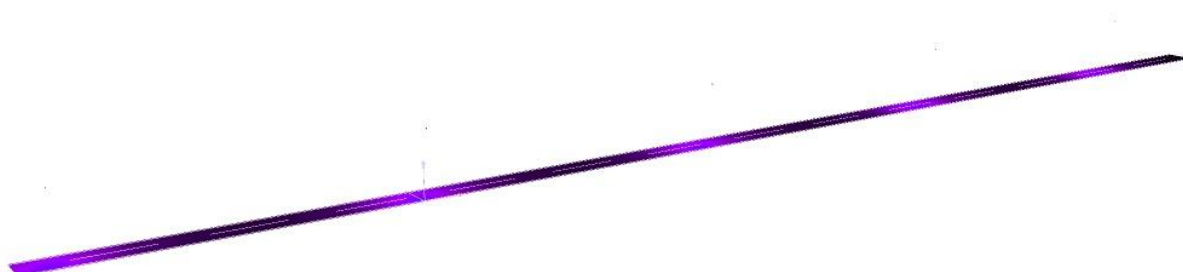
RoadSpark SLIM 60W
Article No.:
Luminous flux (Luminaire): 6072 lm
Luminous flux (Lamps): 7440 lm
Luminaire Wattage: 60.0 W
Luminaire classification according to CIE: 100
CIE flux code: 35 68 94 100 82
Fitting: 1 x Cree XP-G (Correction Factor 1.000).

See our luminaire
catalog for an image of
the luminaire.



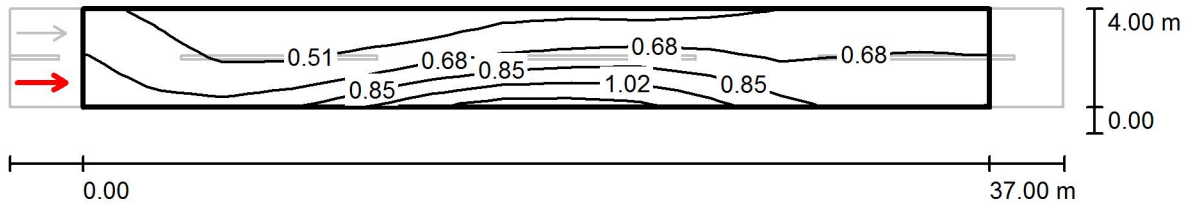
Operator
Telephone
Fax
e-Mail

Gaiziņa iela / False Color Rendering



Operator
Telephone
Fax
e-Mail

Gaiziņa iela / Valuation Field Roadway 1 / Observer 1 / Isolines (L)



Values in Candela/m², Scale 1 : 308

Grid: 13 x 6 Points

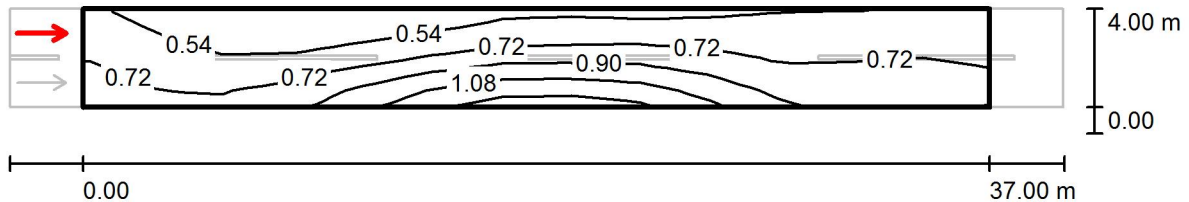
Observer Position: (-60.000 m, 1.000 m, 1.500 m)

tarmac: R3, q0: 0.070

	L_{av} [cd/m ²]	U0	UI	TI [%]
Calculated values:	0.67	0.56	0.56	13
Required values according to class ME5:	≥ 0.50	≥ 0.35	≥ 0.40	≤ 15
Fulfilled/Not fulfilled:	✓	✓	✓	✓

Operator
Telephone
Fax
e-Mail

Gaiziņa iela / Valuation Field Roadway 1 / Observer 2 / Isolines (L)



Values in Candela/m², Scale 1 : 308

Grid: 13 x 6 Points

Observer Position: (-60.000 m, 3.000 m, 1.500 m)

tarmac: R3, q0: 0.070

	L_{av} [cd/m ²]	U0	UI	TI [%]
Calculated values:	0.72	0.56	0.69	10
Required values according to class ME5:	≥ 0.50	≥ 0.35	≥ 0.40	≤ 15
Fulfilled/Not fulfilled:	✓	✓	✓	✓

Operator
Telephone
Fax
e-Mail

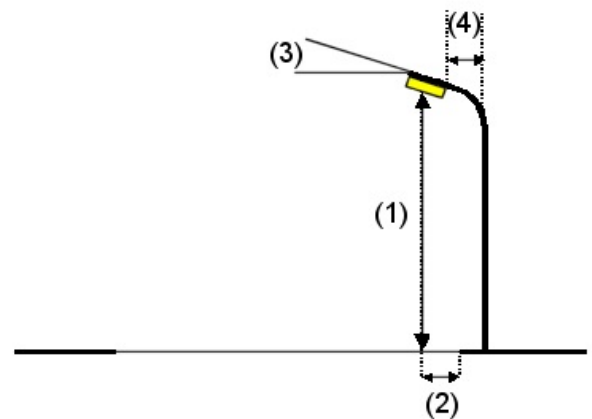
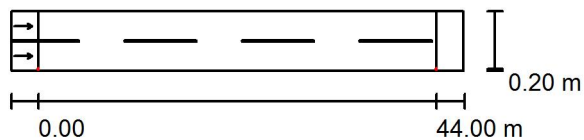
Lazdu iela / Planning data

Street Profile

Roadway 1 (Width: 6.500 m, Number of lanes: 2, tarmac: R3, q0: 0.070)

Light loss factor: 0.85

Luminaire Arrangements



Luminaire:	RoadSpark SLIM 60W
Luminous flux (Luminaire):	6072 lm
Luminous flux (Lamps):	7440 lm
Luminaire Wattage:	60.0 W
Arrangement:	Single row, bottom
Pole Distance:	44.000 m
Mounting Height (1):	9.500 m
Height:	9.500 m
Overhang (2):	0.200 m
Boom Angle (3):	0.0 °
Boom Length (4):	2.500 m

Maximum luminous intensities

at 70°:	457 cd/klm
at 80°:	96 cd/klm
at 90°:	12 cd/klm

Any direction forming the specified angle from the downward vertical, with the luminaire installed for use.

No luminous intensities above 90°.

Arrangement complies with luminous intensity class G3.

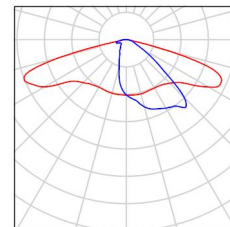
Arrangement complies with glare index class D.4.

Operator
Telephone
Fax
e-Mail

Lazdu iela / Luminaire parts list

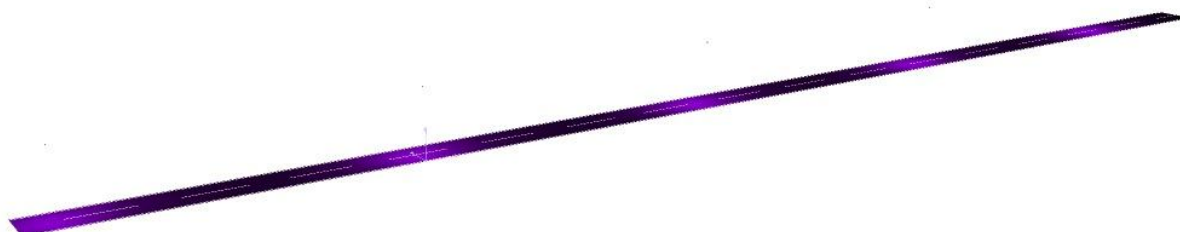
RoadSpark SLIM 60W
Article No.:
Luminous flux (Luminaire): 6072 lm
Luminous flux (Lamps): 7440 lm
Luminaire Wattage: 60.0 W
Luminaire classification according to CIE: 100
CIE flux code: 35 68 94 100 82
Fitting: 1 x Cree XP-G (Correction Factor 1.000).

See our luminaire
catalog for an image of
the luminaire.



Operator
Telephone
Fax
e-Mail

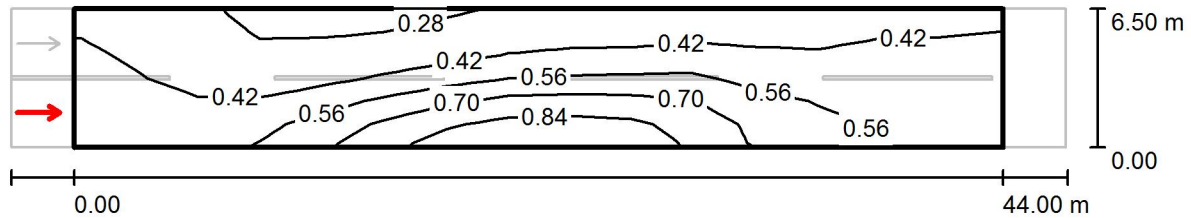
Lazdu iela / False Color Rendering



0 20 30 40 50 70 90 120 300 lx

Operator
Telephone
Fax
e-Mail

Lazdu iela / Valuation Field Roadway 1 / Observer 1 / Isolines (L)



Values in Candela/m², Scale 1 : 358

Grid: 15 x 6 Points

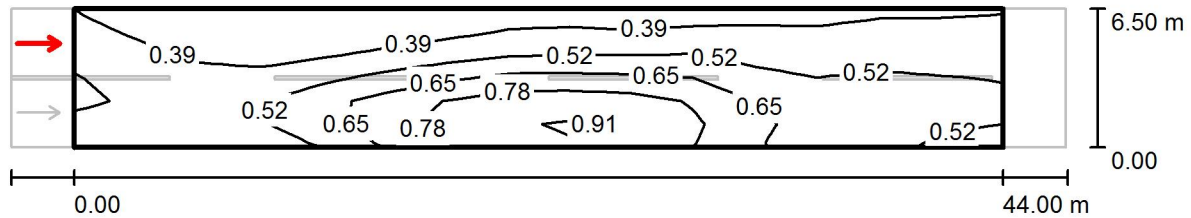
Observer Position: (-60.000 m, 1.625 m, 1.500 m)

tarmac: R3, q0: 0.070

	L_{av} [cd/m²]	U0	UI	TI [%]
Calculated values:	0.50	0.51	0.56	12
Required values according to class ME5:	≥ 0.50	≥ 0.35	≥ 0.40	≤ 15
Fulfilled/Not fulfilled:	<input checked="" type="checkbox"/>	<input checked="" type="checkbox"/>	<input checked="" type="checkbox"/>	<input checked="" type="checkbox"/>

Operator
Telephone
Fax
e-Mail

Lazdu iela / Valuation Field Roadway 1 / Observer 2 / Isolines (L)



Values in Candela/m², Scale 1 : 358

Grid: 15 x 6 Points

Observer Position: (-60.000 m, 4.875 m, 1.500 m)

tarmac: R3, q0: 0.070

	L_{av} [cd/m²]	U0	UI	TI [%]
Calculated values:	0.53	0.52	0.65	9
Required values according to class ME5:	≥ 0.50	≥ 0.35	≥ 0.40	≤ 15
Fulfilled/Not fulfilled:	<input checked="" type="checkbox"/>	<input checked="" type="checkbox"/>	<input checked="" type="checkbox"/>	<input checked="" type="checkbox"/>

Operator
Telephone
Fax
e-Mail

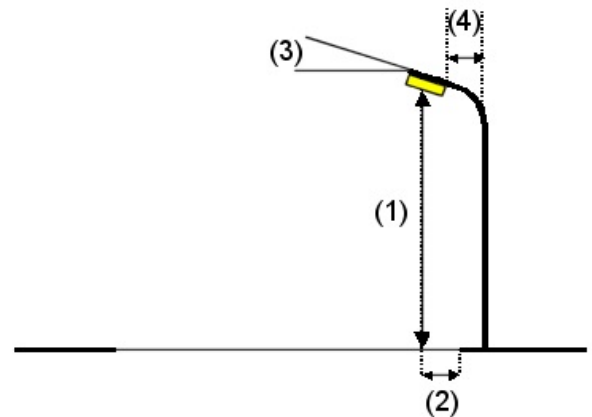
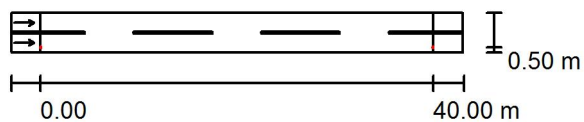
Egļu iela / Planning data

Street Profile

Roadway 1 (Width: 4.000 m, Number of lanes: 2, tarmac: R3, q0: 0.070)

Light loss factor: 0.85

Luminaire Arrangements



Luminaire:	RoadSpark SLIM 60W
Luminous flux (Luminaire):	6072 lm
Luminous flux (Lamps):	7440 lm
Luminaire Wattage:	60.0 W
Arrangement:	Single row, bottom
Pole Distance:	40.000 m
Mounting Height (1):	9.500 m
Height:	9.500 m
Overhang (2):	0.500 m
Boom Angle (3):	0.0 °
Boom Length (4):	2.500 m

Maximum luminous intensities

at 70°:	457 cd/klm
at 80°:	96 cd/klm
at 90°:	12 cd/klm

Any direction forming the specified angle from the downward vertical, with the luminaire installed for use.

No luminous intensities above 90°.

Arrangement complies with luminous intensity class G3.

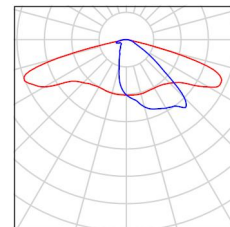
Arrangement complies with glare index class D.4.

Operator
Telephone
Fax
e-Mail

Egļu iela / Luminaire parts list

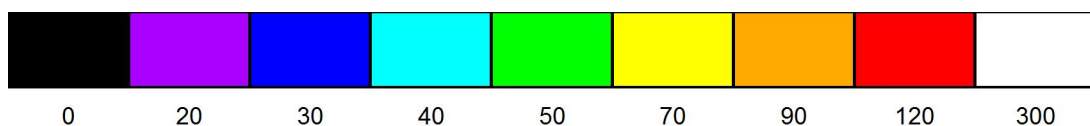
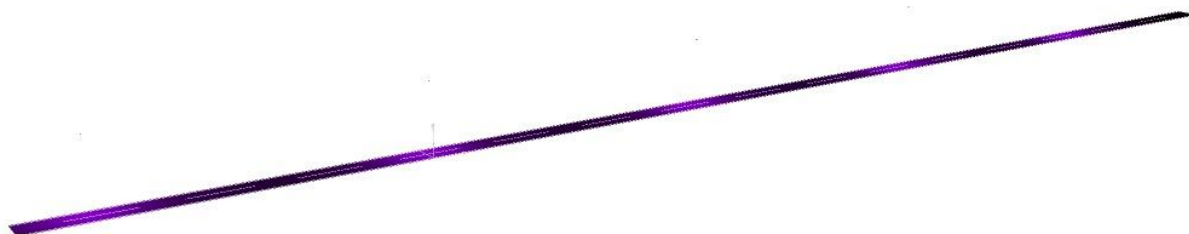
RoadSpark SLIM 60W
Article No.:
Luminous flux (Luminaire): 6072 lm
Luminous flux (Lamps): 7440 lm
Luminaire Wattage: 60.0 W
Luminaire classification according to CIE: 100
CIE flux code: 35 68 94 100 82
Fitting: 1 x Cree XP-G (Correction Factor 1.000).

See our luminaire
catalog for an image of
the luminaire.



Operator
Telephone
Fax
e-Mail

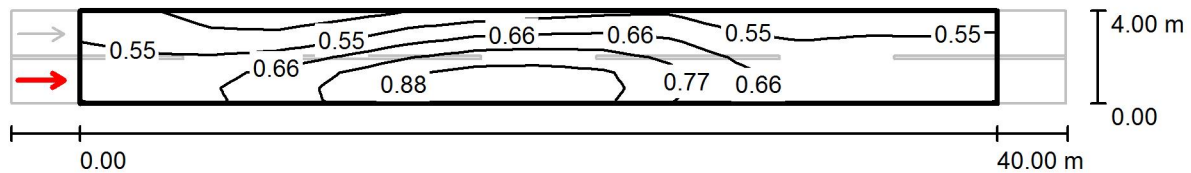
Eglu iela / False Color Rendering



lx

Operator
Telephone
Fax
e-Mail

Egļu iela / Valuation Field Roadway 1 / Observer 1 / Isolines (L)



Values in Candela/m², Scale 1 : 329

Grid: 14 x 6 Points

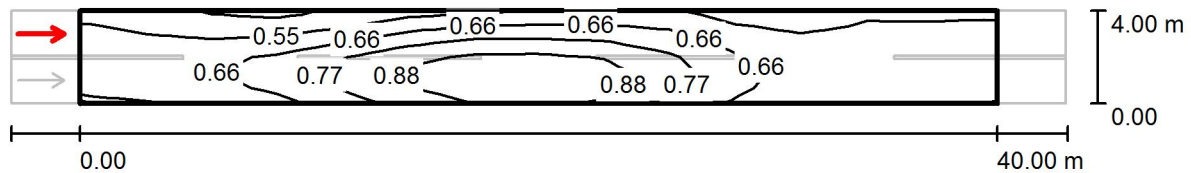
Observer Position: (-60.000 m, 1.000 m, 1.500 m)

tarmac: R3, q0: 0.070

	L_{av} [cd/m ²]	U0	UI	TI [%]
Calculated values:	0.65	0.62	0.60	10
Required values according to class ME5:	≥ 0.50	≥ 0.35	≥ 0.40	≤ 15
Fulfilled/Not fulfilled:	✓	✓	✓	✓

Operator
Telephone
Fax
e-Mail

Egļu iela / Valuation Field Roadway 1 / Observer 2 / Isolines (L)



Values in Candela/m², Scale 1 : 329

Grid: 14 x 6 Points

Observer Position: (-60.000 m, 3.000 m, 1.500 m)

tarmac: R3, q0: 0.070

	L_{av} [cd/m ²]	U0	UI	TI [%]
Calculated values:	0.67	0.65	0.68	9
Required values according to class ME5:	≥ 0.50	≥ 0.35	≥ 0.40	≤ 15
Fulfilled/Not fulfilled:	✓	✓	✓	✓

Operator
Telephone
Fax
e-Mail

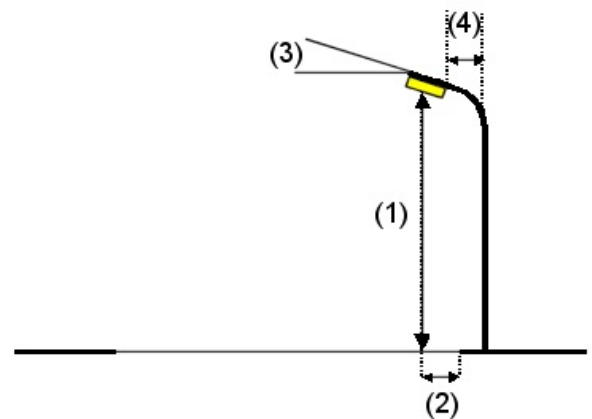
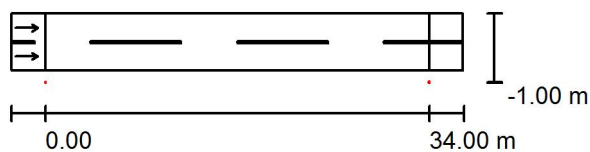
Ābeļu iela / Planning data

Street Profile

Roadway 1 (Width: 5.000 m, Number of lanes: 2, tarmac: R3, q0: 0.070)

Light loss factor: 0.85

Luminaire Arrangements



Luminaire:	RoadSpark SLIM 60W
Luminous flux (Luminaire):	6072 lm
Luminous flux (Lamps):	7440 lm
Luminaire Wattage:	60.0 W
Arrangement:	Single row, bottom
Pole Distance:	34.000 m
Mounting Height (1):	8.000 m
Height:	8.000 m
Overhang (2):	-1.000 m
Boom Angle (3):	0.0 °
Boom Length (4):	1.000 m

Maximum luminous intensities

at 70°:	457 cd/klm
at 80°:	96 cd/klm
at 90°:	12 cd/klm

Any direction forming the specified angle from the downward vertical, with the luminaire installed for use.

No luminous intensities above 90°.

Arrangement complies with luminous intensity class G3.

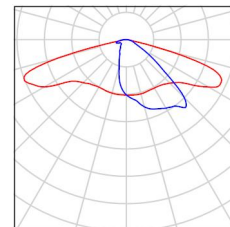
Arrangement complies with glare index class D.4.

Operator
Telephone
Fax
e-Mail

Ābeļu iela / Luminaire parts list

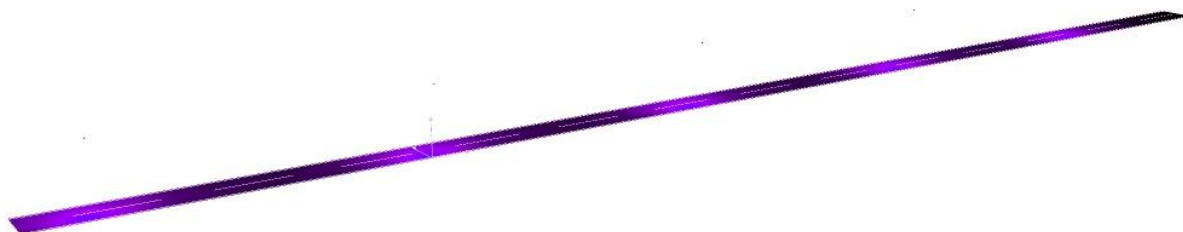
RoadSpark SLIM 60W
Article No.:
Luminous flux (Luminaire): 6072 lm
Luminous flux (Lamps): 7440 lm
Luminaire Wattage: 60.0 W
Luminaire classification according to CIE: 100
CIE flux code: 35 68 94 100 82
Fitting: 1 x Cree XP-G (Correction Factor 1.000).

See our luminaire
catalog for an image of
the luminaire.



Operator
Telephone
Fax
e-Mail

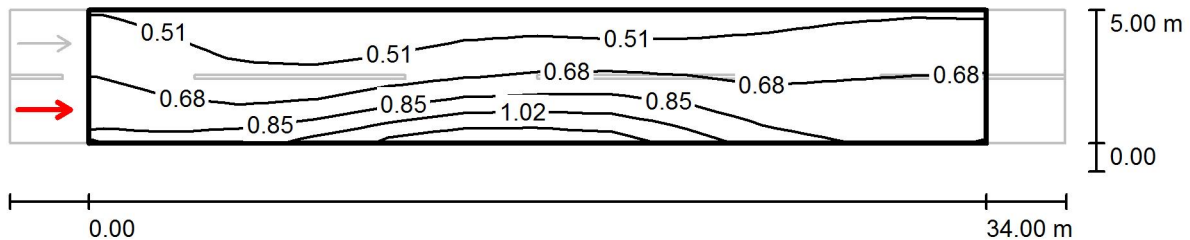
Ābeļu iela / False Color Rendering



0 20 30 40 50 70 90 120 300 lx

Operator
Telephone
Fax
e-Mail

Ābeļu iela / Valuation Field Roadway 1 / Observer 1 / Isolines (L)



Values in Candela/m², Scale 1 : 286

Grid: 12 x 6 Points

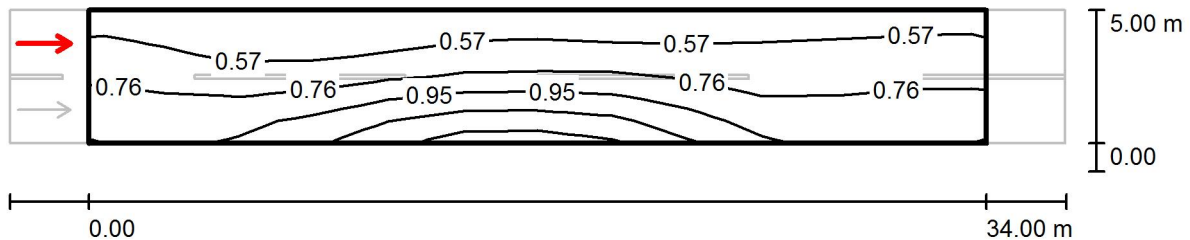
Observer Position: (-60.000 m, 1.250 m, 1.500 m)

tarmac: R3, q0: 0.070

	L_{av} [cd/m²]	U0	UI	TI [%]
Calculated values:	0.68	0.59	0.68	13
Required values according to class ME5:	≥ 0.50	≥ 0.35	≥ 0.40	≤ 15
Fulfilled/Not fulfilled:	✓	✓	✓	✓

Operator
Telephone
Fax
e-Mail

Ābeļu iela / Valuation Field Roadway 1 / Observer 2 / Isolines (L)



Values in Candela/m², Scale 1 : 286

Grid: 12 x 6 Points

Observer Position: (-60.000 m, 3.750 m, 1.500 m)

tarmac: R3, q0: 0.070

	L_{av} [cd/m ²]	U0	UI	TI [%]
Calculated values:	0.75	0.57	0.79	9
Required values according to class ME5:	≥ 0.50	≥ 0.35	≥ 0.40	≤ 15
Fulfilled/Not fulfilled:	✓	✓	✓	✓

Operator
Telephone
Fax
e-Mail

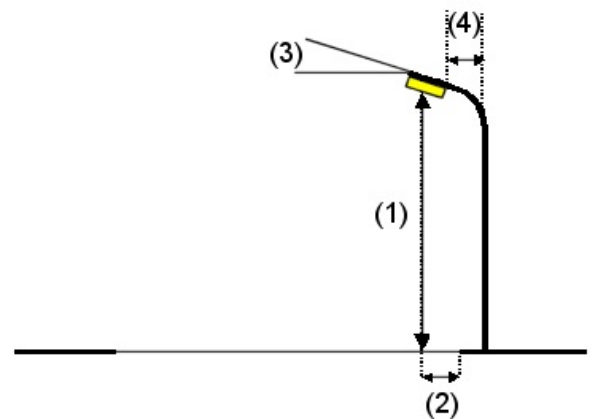
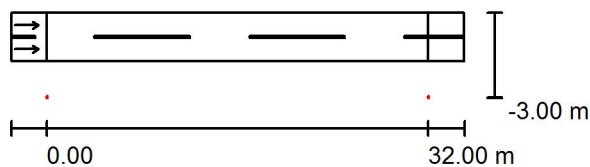
Augu iela / Planning data

Street Profile

Roadway 1 (Width: 4.000 m, Number of lanes: 2, tarmac: R3, q0: 0.070)

Light loss factor: 0.85

Luminaire Arrangements



Luminaire:	SIA Elnitor RoadSpark SLIM 80W
Luminous flux (Luminaire):	8081 lm
Luminous flux (Lamps):	9200 lm
Luminaire Wattage:	80.0 W
Arrangement:	Single row, bottom
Pole Distance:	32.000 m
Mounting Height (1):	8.000 m
Height:	8.000 m
Overhang (2):	-3.000 m
Boom Angle (3):	0.0 °
Boom Length (4):	1.000 m

Maximum luminous intensities

at 70°:	492 cd/klm
at 80°:	103 cd/klm
at 90°:	13 cd/klm

Any direction forming the specified angle from the downward vertical, with the luminaire installed for use.

No luminous intensities above 90°.

Arrangement complies with luminous intensity class G2.

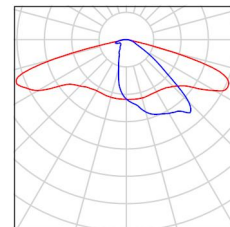
Arrangement complies with glare index class D.4.

Operator
Telephone
Fax
e-Mail

Augu iela / Luminaire parts list

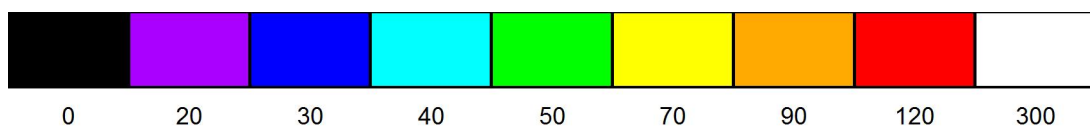
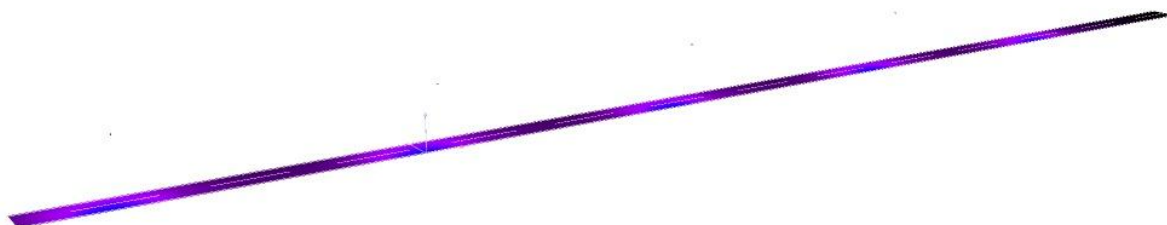
SIA Elnitor RoadSpark SLIM 80W
Article No.:
Luminous flux (Luminaire): 8081 lm
Luminous flux (Lamps): 9200 lm
Luminaire Wattage: 80.0 W
Luminaire classification according to CIE: 100
CIE flux code: 35 68 94 100 88
Fitting: 1 x Cree XP-G (Correction Factor 1.000).

See our luminaire
catalog for an image of
the luminaire.



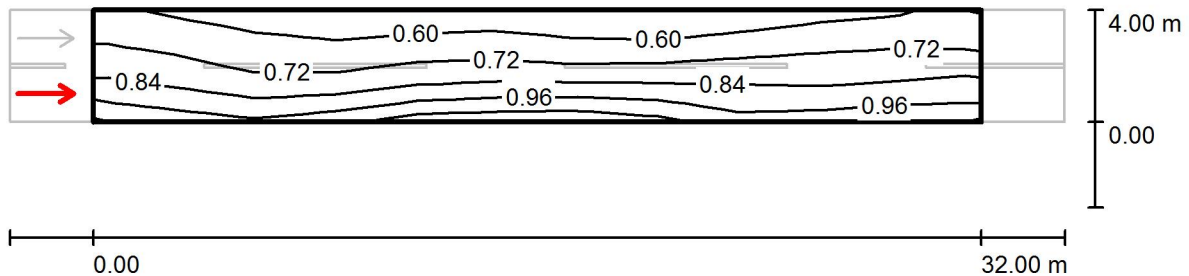
Operator
Telephone
Fax
e-Mail

Augu iela / False Color Rendering



Operator
Telephone
Fax
e-Mail

Augu iela / Valuation Field Roadway 1 / Observer 1 / Isolines (L)



Values in Candela/m², Scale 1 : 272

Grid: 11 x 6 Points

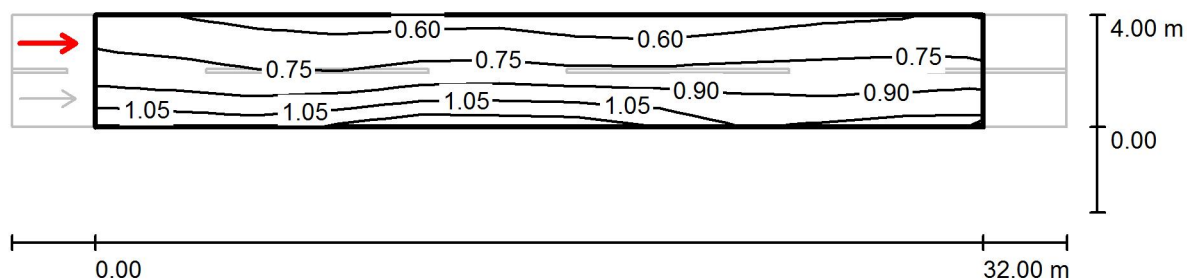
Observer Position: (-60.000 m, 1.000 m, 1.500 m)

tarmac: R3, q0: 0.070

	L_{av} [cd/m ²]	U0	UI	TI [%]
Calculated values:	0.76	0.67	0.84	13
Required values according to class ME4b:	≥ 0.75	≥ 0.40	≥ 0.50	≤ 15
Fulfilled/Not fulfilled:	✓	✓	✓	✓

Operator
Telephone
Fax
e-Mail

Augu iela / Valuation Field Roadway 1 / Observer 2 / Isolines (L)



Values in Candela/m², Scale 1 : 272

Grid: 11 x 6 Points

Observer Position: (-60.000 m, 3.000 m, 1.500 m)

tarmac: R3, q0: 0.070

	L_{av} [cd/m ²]	U0	UI	TI [%]
Calculated values:	0.82	0.64	0.85	9
Required values according to class ME4b:	≥ 0.75	≥ 0.40	≥ 0.50	≤ 15
Fulfilled/Not fulfilled:	<input checked="" type="checkbox"/>	<input checked="" type="checkbox"/>	<input checked="" type="checkbox"/>	<input checked="" type="checkbox"/>

Operator
Telephone
Fax
e-Mail

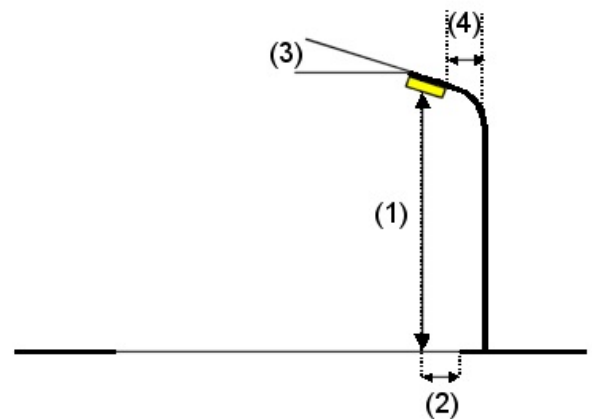
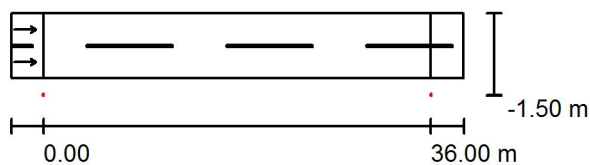
Akmeņu iela / Planning data

Street Profile

Roadway 1 (Width: 6.000 m, Number of lanes: 2, tarmac: R3, q0: 0.070)

Light loss factor: 0.85

Luminaire Arrangements



Luminaire:	SIA Elnitor RoadSpark SLIM 80W
Luminous flux (Luminaire):	8081 lm
Luminous flux (Lamps):	9200 lm
Luminaire Wattage:	80.0 W
Arrangement:	Single row, bottom
Pole Distance:	36.000 m
Mounting Height (1):	8.000 m
Height:	8.000 m
Overhang (2):	-1.500 m
Boom Angle (3):	0.0 °
Boom Length (4):	1.000 m

Maximum luminous intensities

at 70°:	492 cd/klm
at 80°:	103 cd/klm
at 90°:	13 cd/klm

Any direction forming the specified angle from the downward vertical, with the luminaire installed for use.

No luminous intensities above 90°.

Arrangement complies with luminous intensity class G2.

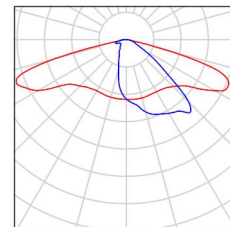
Arrangement complies with glare index class D.4.

Operator
Telephone
Fax
e-Mail

Akmeņu iela / Luminaire parts list

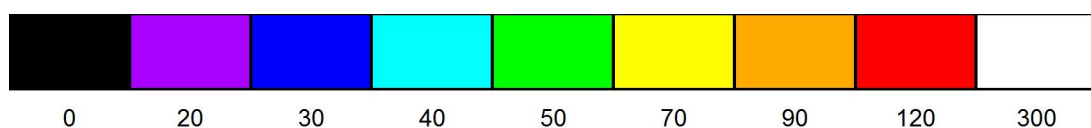
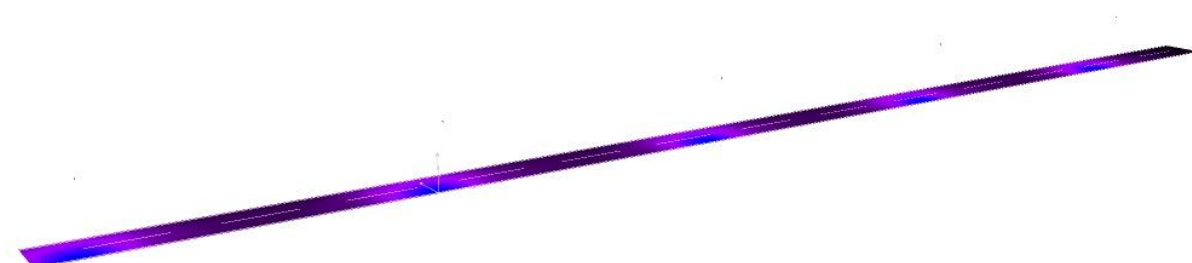
SIA Elnitor RoadSpark SLIM 80W
Article No.:
Luminous flux (Luminaire): 8081 lm
Luminous flux (Lamps): 9200 lm
Luminaire Wattage: 80.0 W
Luminaire classification according to CIE: 100
CIE flux code: 35 68 94 100 88
Fitting: 1 x Cree XP-G (Correction Factor 1.000).

See our luminaire
catalog for an image of
the luminaire.



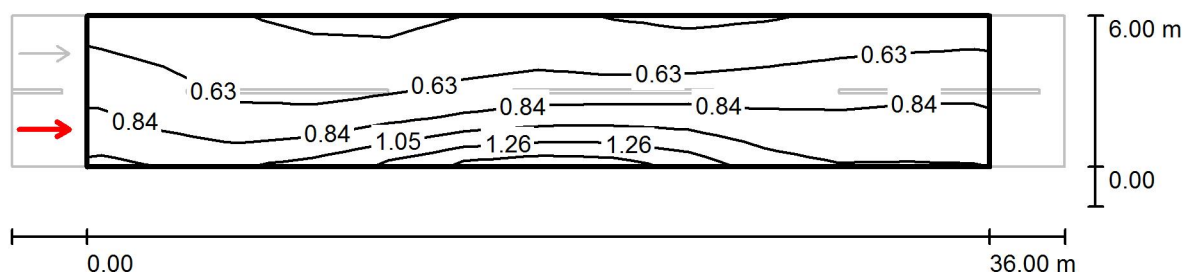
Operator
Telephone
Fax
e-Mail

Akmeņu iela / False Color Rendering



Operator
Telephone
Fax
e-Mail

Akmeņu iela / Valuation Field Roadway 1 / Observer 1 / Isolines (L)



Values in Candela/m², Scale 1 : 301

Grid: 12 x 6 Points

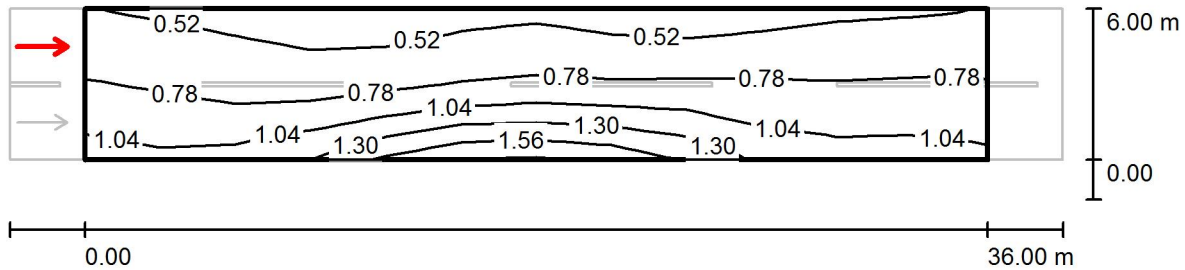
Observer Position: (-60.000 m, 1.500 m, 1.500 m)

tarmac: R3, q0: 0.070

	L_{av} [cd/m ²]	U0	UI	TI [%]
Calculated values:	0.75	0.51	0.63	15
Required values according to class ME4b:	≥ 0.75	≥ 0.40	≥ 0.50	≤ 15
Fulfilled/Not fulfilled:	✓	✓	✓	✓

Operator
Telephone
Fax
e-Mail

Akmeņu iela / Valuation Field Roadway 1 / Observer 2 / Isolines (L)



Values in Candela/m², Scale 1 : 301

Grid: 12 x 6 Points

Observer Position: (-60.000 m, 4.500 m, 1.500 m)

tarmac: R3, q0: 0.070

	L_{av} [cd/m²]	U0	UI	TI [%]
Calculated values:	0.83	0.49	0.76	9
Required values according to class ME4b:	≥ 0.75	≥ 0.40	≥ 0.50	≤ 15
Fulfilled/Not fulfilled:	✓	✓	✓	✓

Operator
Telephone
Fax
e-Mail

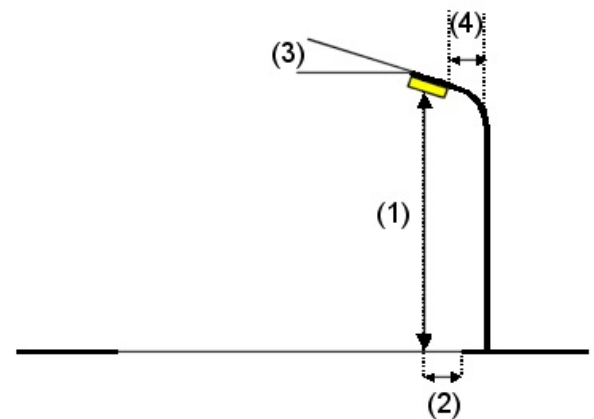
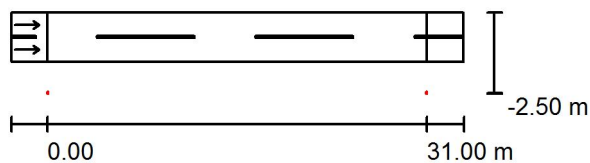
Strauta iela / Planning data

Street Profile

Roadway 1 (Width: 4.000 m, Number of lanes: 2, tarmac: R3, q0: 0.070)

Light loss factor: 0.85

Luminaire Arrangements



Luminaire:	RoadSpark SLIM 60W
Luminous flux (Luminaire):	6072 lm
Luminous flux (Lamps):	7440 lm
Luminaire Wattage:	60.0 W
Arrangement:	Single row, bottom
Pole Distance:	31.000 m
Mounting Height (1):	8.000 m
Height:	8.000 m
Overhang (2):	-2.500 m
Boom Angle (3):	0.0 °
Boom Length (4):	1.000 m

Maximum luminous intensities

at 70°:	457 cd/klm
at 80°:	96 cd/klm
at 90°:	12 cd/klm

Any direction forming the specified angle from the downward vertical, with the luminaire installed for use.

No luminous intensities above 90°.

Arrangement complies with luminous intensity class G3.

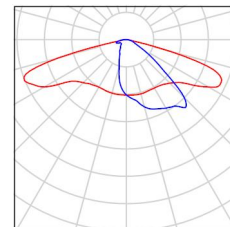
Arrangement complies with glare index class D.4.

Operator
Telephone
Fax
e-Mail

Strauta iela / Luminaire parts list

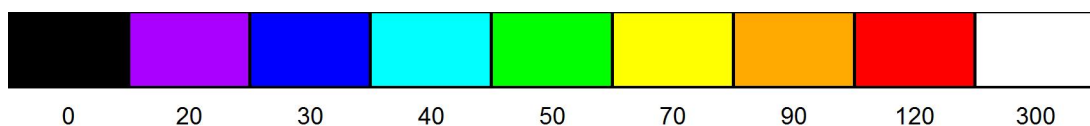
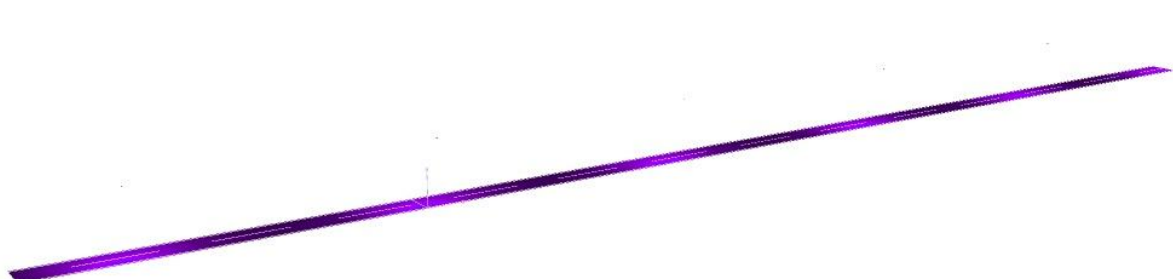
RoadSpark SLIM 60W
Article No.:
Luminous flux (Luminaire): 6072 lm
Luminous flux (Lamps): 7440 lm
Luminaire Wattage: 60.0 W
Luminaire classification according to CIE: 100
CIE flux code: 35 68 94 100 82
Fitting: 1 x Cree XP-G (Correction Factor 1.000).

See our luminaire
catalog for an image of
the luminaire.



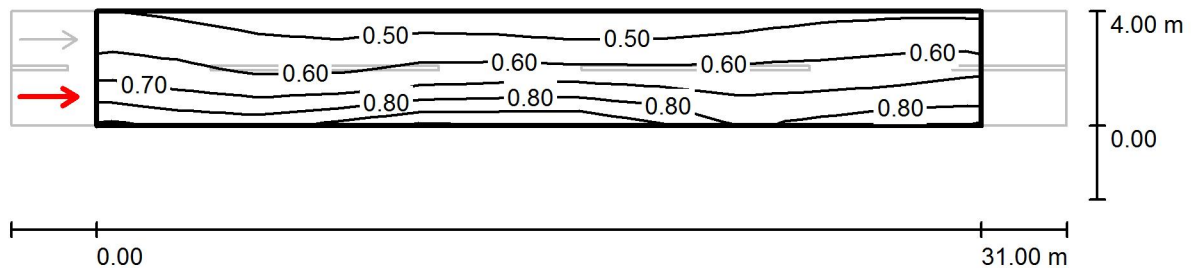
Operator
Telephone
Fax
e-Mail

Strauta iela / False Color Rendering



Operator
Telephone
Fax
e-Mail

Strauta iela / Valuation Field Roadway 1 / Observer 1 / Isolines (L)



Values in Candela/m², Scale 1 : 265

Grid: 11 x 6 Points

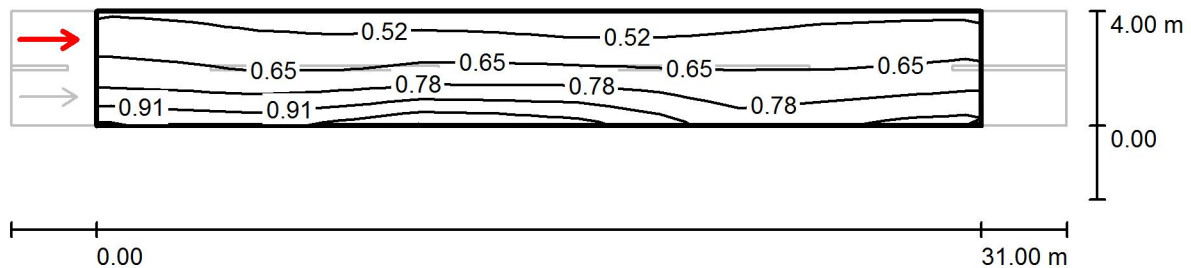
Observer Position: (-60.000 m, 1.000 m, 1.500 m)

tarmac: R3, q0: 0.070

	L_{av} [cd/m ²]	U0	UI	TI [%]
Calculated values:	0.64	0.67	0.84	12
Required values according to class ME5:	≥ 0.50	≥ 0.35	≥ 0.40	≤ 15
Fulfilled/Not fulfilled:	✓	✓	✓	✓

Operator
Telephone
Fax
e-Mail

Strauta iela / Valuation Field Roadway 1 / Observer 2 / Isolines (L)



Values in Candela/m², Scale 1 : 265

Grid: 11 x 6 Points

Observer Position: (-60.000 m, 3.000 m, 1.500 m)

tarmac: R3, q0: 0.070

	L_{av} [cd/m ²]	U0	UI	TI [%]
Calculated values:	0.69	0.65	0.88	9
Required values according to class ME5:	≥ 0.50	≥ 0.35	≥ 0.40	≤ 15
Fulfilled/Not fulfilled:	✓	✓	✓	✓

Operator
Telephone
Fax
e-Mail

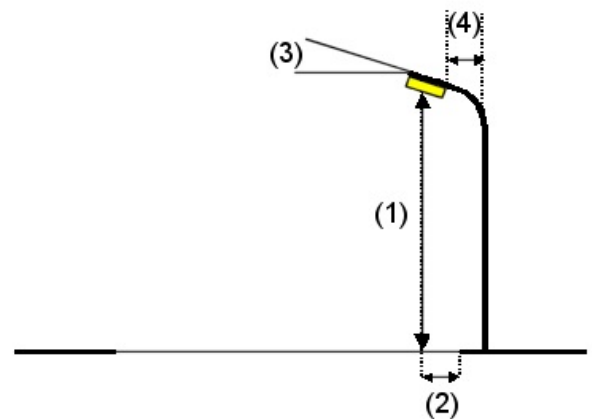
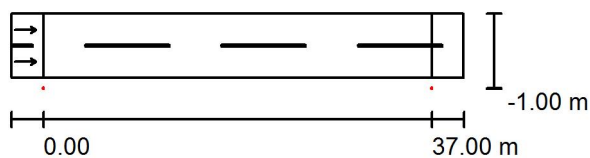
M.Riekstas iela / Planning data

Street Profile

Roadway 1 (Width: 6.000 m, Number of lanes: 2, tarmac: R3, q0: 0.070)

Light loss factor: 0.85

Luminaire Arrangements



Luminaire:	SIA Elnitor RoadSpark SLIM 80W
Luminous flux (Luminaire):	8081 lm
Luminous flux (Lamps):	9200 lm
Luminaire Wattage:	80.0 W
Arrangement:	Single row, bottom
Pole Distance:	37.000 m
Mounting Height (1):	8.000 m
Height:	8.000 m
Overhang (2):	-1.000 m
Boom Angle (3):	0.0 °
Boom Length (4):	1.000 m

Maximum luminous intensities

at 70°:	492 cd/klm
at 80°:	103 cd/klm
at 90°:	13 cd/klm

Any direction forming the specified angle from the downward vertical, with the luminaire installed for use.

No luminous intensities above 90°.

Arrangement complies with luminous intensity class G2.

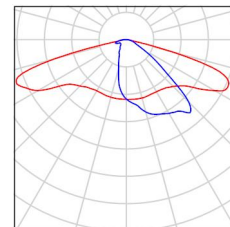
Arrangement complies with glare index class D.4.

Operator
Telephone
Fax
e-Mail

M.Riekstas iela / Luminaire parts list

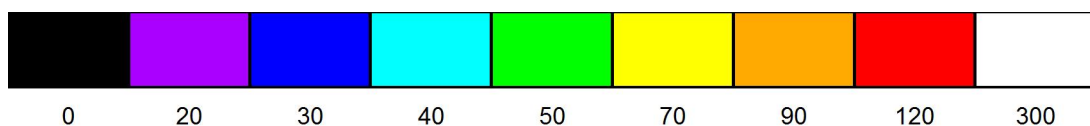
SIA Elnitor RoadSpark SLIM 80W
Article No.:
Luminous flux (Luminaire): 8081 lm
Luminous flux (Lamps): 9200 lm
Luminaire Wattage: 80.0 W
Luminaire classification according to CIE: 100
CIE flux code: 35 68 94 100 88
Fitting: 1 x Cree XP-G (Correction Factor 1.000).

See our luminaire
catalog for an image of
the luminaire.



Operator
Telephone
Fax
e-Mail

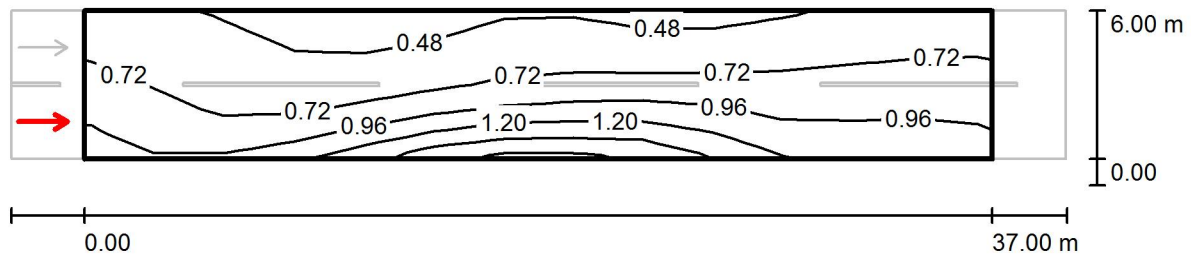
M.Riekstas iela / False Color Rendering



lx

Operator
Telephone
Fax
e-Mail

M.Riekstas iela / Valuation Field Roadway 1 / Observer 1 / Isolines (L)



Values in Candela/m², Scale 1 : 308

Grid: 13 x 6 Points

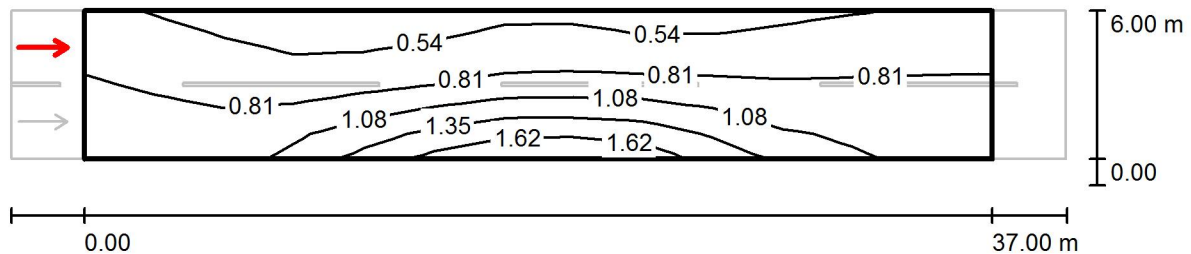
Observer Position: (-60.000 m, 1.500 m, 1.500 m)

tarmac: R3, q0: 0.070

	L_{av} [cd/m²]	U0	UI	TI [%]
Calculated values:	0.79	0.50	0.58	15
Required values according to class ME4b:	≥ 0.75	≥ 0.40	≥ 0.50	≤ 15
Fulfilled/Not fulfilled:	<input checked="" type="checkbox"/>	<input checked="" type="checkbox"/>	<input checked="" type="checkbox"/>	<input checked="" type="checkbox"/>

Operator
Telephone
Fax
e-Mail

M.Riekstas iela / Valuation Field Roadway 1 / Observer 2 / Isolines (L)



Values in Candela/m², Scale 1 : 308

Grid: 13 x 6 Points

Observer Position: (-60.000 m, 4.500 m, 1.500 m)

tarmac: R3, q0: 0.070

	L_{av} [cd/m ²]	U0	UI	TI [%]
Calculated values:	0.86	0.49	0.72	10
Required values according to class ME4b:	≥ 0.75	≥ 0.40	≥ 0.50	≤ 15
Fulfilled/Not fulfilled:	<input checked="" type="checkbox"/>	<input checked="" type="checkbox"/>	<input checked="" type="checkbox"/>	<input checked="" type="checkbox"/>

Operator
Telephone
Fax
e-Mail

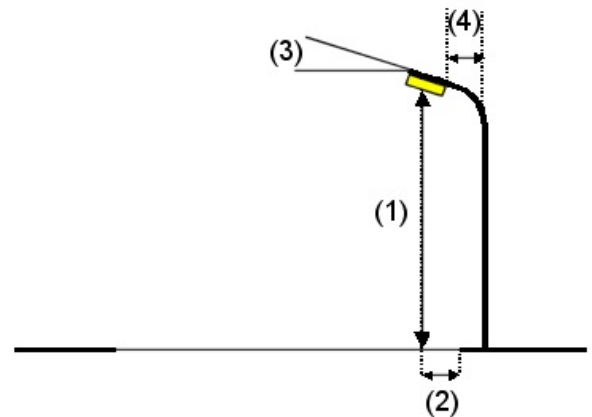
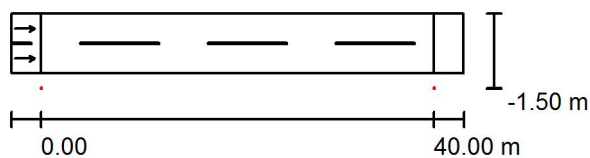
Jaunā iela / Planning data

Street Profile

Roadway 1 (Width: 6.000 m, Number of lanes: 2, tarmac: R3, q0: 0.070)

Light loss factor: 0.85

Luminaire Arrangements



Luminaire:	RoadSpark SLIM 60W
Luminous flux (Luminaire):	6072 lm
Luminous flux (Lamps):	7440 lm
Luminaire Wattage:	60.0 W
Arrangement:	Single row, bottom
Pole Distance:	40.000 m
Mounting Height (1):	8.000 m
Height:	8.000 m
Overhang (2):	-1.500 m
Boom Angle (3):	0.0 °
Boom Length (4):	1.000 m

Maximum luminous intensities

at 70°:	457 cd/klm
at 80°:	96 cd/klm
at 90°:	12 cd/klm

Any direction forming the specified angle from the downward vertical, with the luminaire installed for use.

No luminous intensities above 90°.

Arrangement complies with luminous intensity class G3.

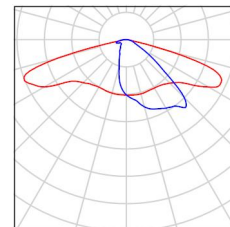
Arrangement complies with glare index class D.4.

Operator
Telephone
Fax
e-Mail

Jaunā iela / Luminaire parts list

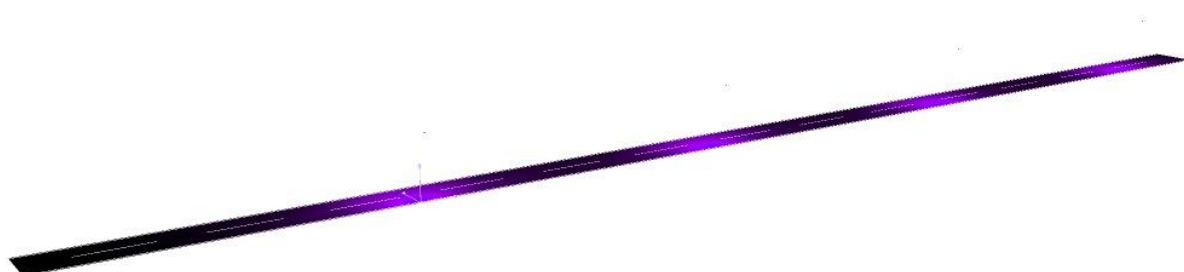
RoadSpark SLIM 60W
Article No.:
Luminous flux (Luminaire): 6072 lm
Luminous flux (Lamps): 7440 lm
Luminaire Wattage: 60.0 W
Luminaire classification according to CIE: 100
CIE flux code: 35 68 94 100 82
Fitting: 1 x Cree XP-G (Correction Factor 1.000).

See our luminaire
catalog for an image of
the luminaire.



Operator
Telephone
Fax
e-Mail

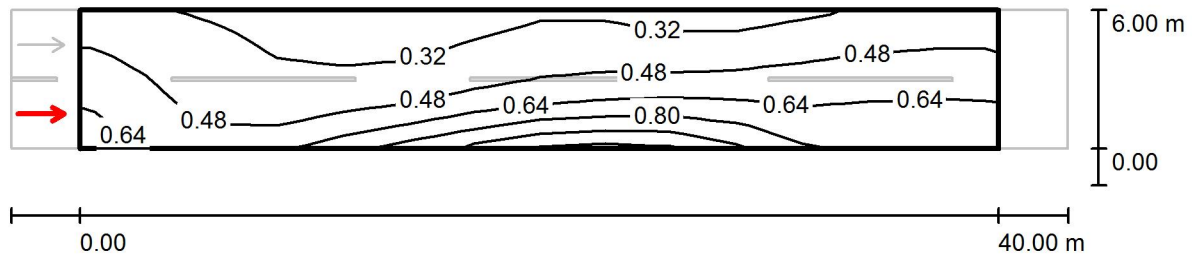
Jaunā iela / False Color Rendering



0 20 30 40 50 70 90 120 300 lx

Operator
Telephone
Fax
e-Mail

Jaunā iela / Valuation Field Roadway 1 / Observer 1 / Isolines (L)



Values in Candela/m², Scale 1 : 329

Grid: 14 x 6 Points

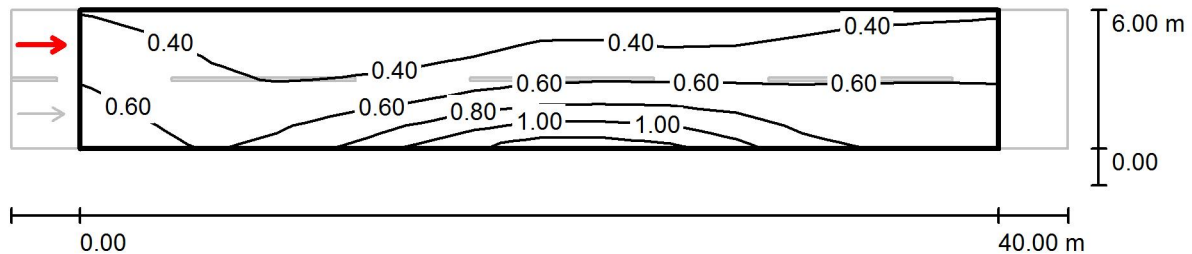
Observer Position: (-60.000 m, 1.500 m, 1.500 m)

tarmac: R3, q0: 0.070

	L_{av} [cd/m²]	U0	UI	TI [%]
Calculated values:	0.51	0.46	0.50	15
Required values according to class ME5:	≥ 0.50	≥ 0.35	≥ 0.40	≤ 15
Fulfilled/Not fulfilled:	<input checked="" type="checkbox"/>	<input checked="" type="checkbox"/>	<input checked="" type="checkbox"/>	<input checked="" type="checkbox"/>

Operator
Telephone
Fax
e-Mail

Jaunā iela / Valuation Field Roadway 1 / Observer 2 / Isolines (L)



Values in Candela/m², Scale 1 : 329

Grid: 14 x 6 Points

Observer Position: (-60.000 m, 4.500 m, 1.500 m)

tarmac: R3, q0: 0.070

	L_{av} [cd/m ²]	U0	UI	TI [%]
Calculated values:	0.56	0.44	0.59	10
Required values according to class ME5:	≥ 0.50	≥ 0.35	≥ 0.40	≤ 15
Fulfilled/Not fulfilled:	✓	✓	✓	✓

Operator
Telephone
Fax
e-Mail

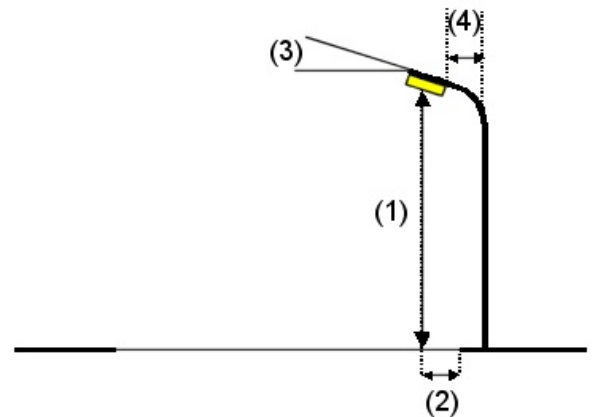
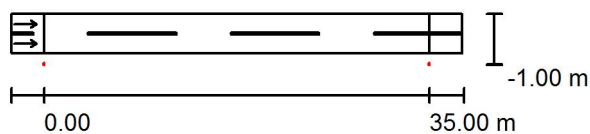
Biržu iela / Planning data

Street Profile

Roadway 1 (Width: 3.500 m, Number of lanes: 2, tarmac: R3, q0: 0.070)

Light loss factor: 0.85

Luminaire Arrangements



Luminaire:	RoadSpark SLIM 60W
Luminous flux (Luminaire):	6072 lm
Luminous flux (Lamps):	7440 lm
Luminaire Wattage:	60.0 W
Arrangement:	Single row, bottom
Pole Distance:	35.000 m
Mounting Height (1):	8.000 m
Height:	8.000 m
Overhang (2):	-1.000 m
Boom Angle (3):	0.0 °
Boom Length (4):	2.000 m

Maximum luminous intensities

at 70°:	457 cd/klm
at 80°:	96 cd/klm
at 90°:	12 cd/klm

Any direction forming the specified angle from the downward vertical, with the luminaire installed for use.

No luminous intensities above 90°.

Arrangement complies with luminous intensity class G3.

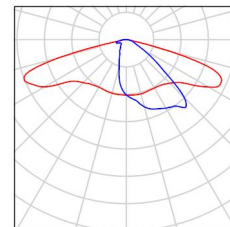
Arrangement complies with glare index class D.4.

Operator
Telephone
Fax
e-Mail

Biržu iela / Luminaire parts list

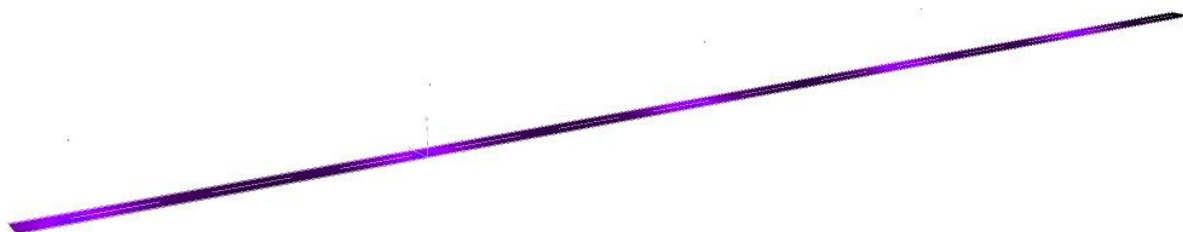
RoadSpark SLIM 60W
Article No.:
Luminous flux (Luminaire): 6072 lm
Luminous flux (Lamps): 7440 lm
Luminaire Wattage: 60.0 W
Luminaire classification according to CIE: 100
CIE flux code: 35 68 94 100 82
Fitting: 1 x Cree XP-G (Correction Factor 1.000).

See our luminaire
catalog for an image of
the luminaire.



Operator
Telephone
Fax
e-Mail

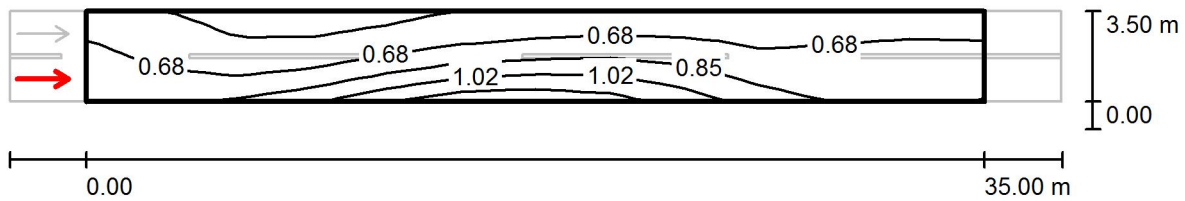
Biržu iela / False Color Rendering



0 20 30 40 50 70 90 120 300 lx

Operator
Telephone
Fax
e-Mail

Biržu iela / Valuation Field Roadway 1 / Observer 1 / Isolines (L)



Values in Candela/m², Scale 1 : 294

Grid: 12 x 6 Points

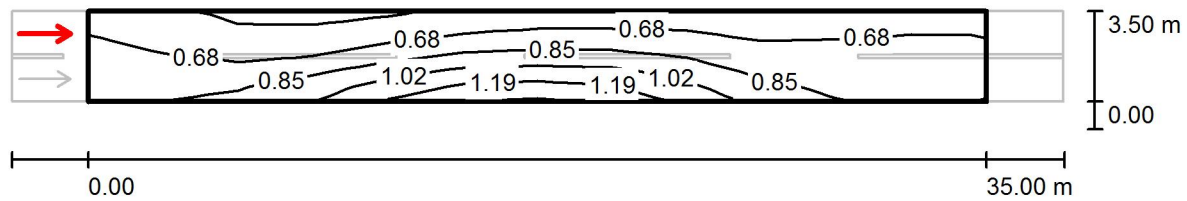
Observer Position: (-60.000 m, 0.875 m, 1.500 m)

tarmac: R3, q0: 0.070

	L_{av} [cd/m ²]	U0	UI	TI [%]
Calculated values:	0.74	0.58	0.64	13
Required values according to class ME5:	≥ 0.50	≥ 0.35	≥ 0.40	≤ 15
Fulfilled/Not fulfilled:	✓	✓	✓	✓

Operator
Telephone
Fax
e-Mail

Biržu iela / Valuation Field Roadway 1 / Observer 2 / Isolines (L)



Values in Candela/m², Scale 1 : 294

Grid: 12 x 6 Points

Observer Position: (-60.000 m, 2.625 m, 1.500 m)

tarmac: R3, q0: 0.070

	L_{av} [cd/m ²]	U0	UI	TI [%]
Calculated values:	0.79	0.59	0.70	10
Required values according to class ME5:	≥ 0.50	≥ 0.35	≥ 0.40	≤ 15
Fulfilled/Not fulfilled:	<input checked="" type="checkbox"/>	<input checked="" type="checkbox"/>	<input checked="" type="checkbox"/>	<input checked="" type="checkbox"/>

Operator
Telephone
Fax
e-Mail

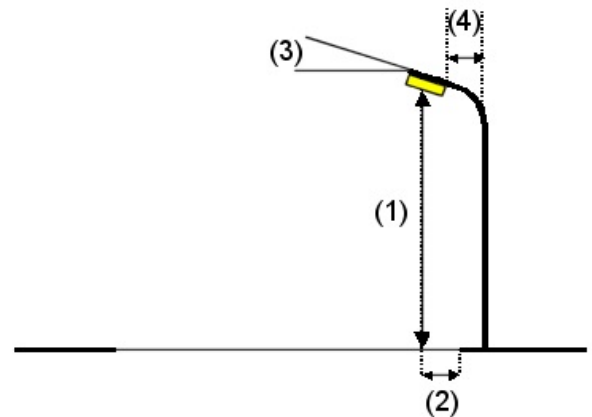
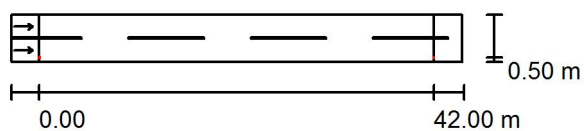
Alunāna iela / Planning data

Street Profile

Roadway 1 (Width: 5.000 m, Number of lanes: 2, tarmac: R3, q0: 0.070)

Light loss factor: 0.85

Luminaire Arrangements



Luminaire:	RoadSpark SLIM 60W
Luminous flux (Luminaire):	6072 lm
Luminous flux (Lamps):	7440 lm
Luminaire Wattage:	60.0 W
Arrangement:	Single row, bottom
Pole Distance:	42.000 m
Mounting Height (1):	9.500 m
Height:	9.500 m
Overhang (2):	0.500 m
Boom Angle (3):	0.0 °
Boom Length (4):	2.000 m

Maximum luminous intensities

at 70°:	457 cd/klm
at 80°:	96 cd/klm
at 90°:	12 cd/klm

Any direction forming the specified angle from the downward vertical, with the luminaire installed for use.

No luminous intensities above 90°.

Arrangement complies with luminous intensity class G3.

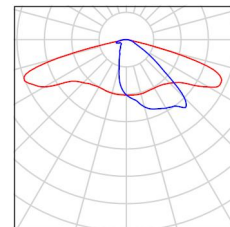
Arrangement complies with glare index class D.4.

Operator
Telephone
Fax
e-Mail

Alunāna iela / Luminaire parts list

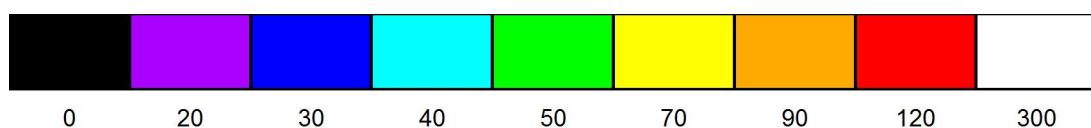
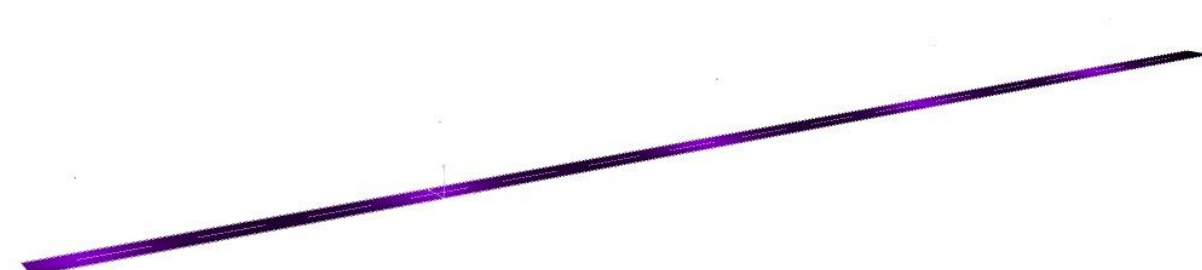
RoadSpark SLIM 60W
Article No.:
Luminous flux (Luminaire): 6072 lm
Luminous flux (Lamps): 7440 lm
Luminaire Wattage: 60.0 W
Luminaire classification according to CIE: 100
CIE flux code: 35 68 94 100 82
Fitting: 1 x Cree XP-G (Correction Factor 1.000).

See our luminaire
catalog for an image of
the luminaire.



Operator
Telephone
Fax
e-Mail

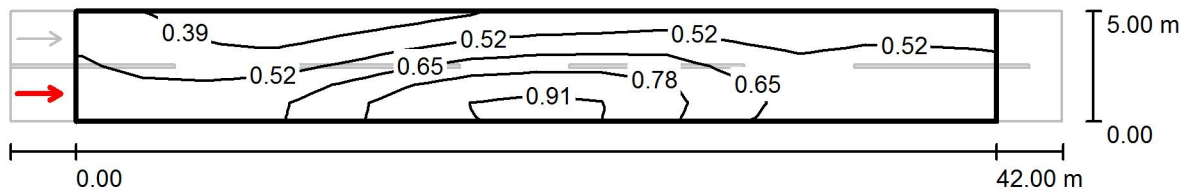
Alunāna iela / False Color Rendering



lx

Operator
Telephone
Fax
e-Mail

Alunāna iela / Valuation Field Roadway 1 / Observer 1 / Isolines (L)



Values in Candela/m², Scale 1 : 344

Grid: 14 x 6 Points

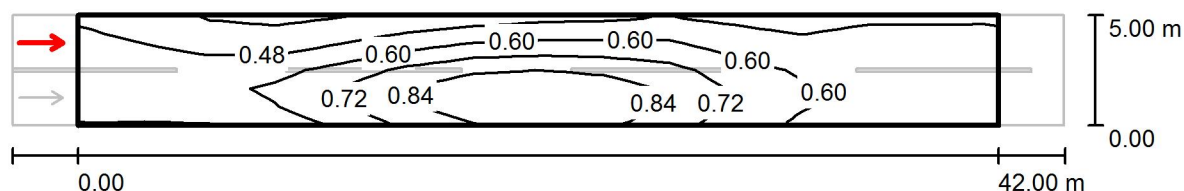
Observer Position: (-60.000 m, 1.250 m, 1.500 m)

tarmac: R3, q0: 0.070

	L_{av} [cd/m ²]	U0	UI	TI [%]
Calculated values:	0.58	0.54	0.59	11
Required values according to class ME5:	≥ 0.50	≥ 0.35	≥ 0.40	≤ 15
Fulfilled/Not fulfilled:	<input checked="" type="checkbox"/>	<input checked="" type="checkbox"/>	<input checked="" type="checkbox"/>	<input checked="" type="checkbox"/>

Operator
Telephone
Fax
e-Mail

Alunāna iela / Valuation Field Roadway 1 / Observer 2 / Isolines (L)



Values in Candela/m², Scale 1 : 344

Grid: 14 x 6 Points

Observer Position: (-60.000 m, 3.750 m, 1.500 m)

tarmac: R3, q0: 0.070

	L_{av} [cd/m ²]	U0	UI	TI [%]
Calculated values:	0.61	0.57	0.65	9
Required values according to class ME5:	≥ 0.50	≥ 0.35	≥ 0.40	≤ 15
Fulfilled/Not fulfilled:	<input checked="" type="checkbox"/>	<input checked="" type="checkbox"/>	<input checked="" type="checkbox"/>	<input checked="" type="checkbox"/>